



# Farmington City

## Culinary Water Impact Fee Facilities Plan

June 2022

Prepared By:



# FARMINGTON CITY CORPORATION

---

## CULINARY WATER IMPACT FEE FACILITIES PLAN (IFFP)

June 2022

J-U-B #55-17-033

Prepared by:



**J-U-B ENGINEERS, INC.**



**THE  
LANGDON  
GROUP**  
a J-U-B COMPANY



**GATEWAY  
MAPPING  
INC.**  
a J-U-B COMPANY

OTHER J-U-B COMPANIES



# **Culinary Water Impact Fee Facilities Plan (IFFP)**

## **Farmington City Corporation**

### Table of Contents

	IFFP Certification .....	3
1.0	Introduction.....	4
1.1	Scope	
1.2	Growth Projections	
2.0	Impact Fee Facilities Plan. ....	5
2.1	Service Area	
2.2	Demands	
2.3	Level of Service (LOS)	
2.4	Inventory	
2.5	Excess Capacity	
2.6	Prioritization	
3.0	Culinary Water System Components .....	8
3.1	Water Rights	
3.2	Source	
3.3	Storage	
3.4	Distribution System	
4.0	Capital Facilities Projects. ....	12
5.0	Conclusion and Recommendations .....	13
Appendix A - Cost Estimates		
Appendix B – Figures		
Appendix C – Data/Documentation		
Appendix D – Water Rights Data		



**FARMINGTON CITY  
CULINARY WATER MASTER PLAN 2022  
IMPACT FEE FACILITIES PLAN (IFFP) CERTIFICATION**

In accordance with 11-36a-306., Certification of impact fee analysis,

"I certify that the attached impact fee facilities plan:

1. includes only the costs of public facilities that are:

- a. allowed under the Impact Fees Act; and
- b. actually incurred; or
- c. projected to be incurred or encumbered within six years after the day on which each impact fee is paid;

2. does not include:

- a. costs of operation and maintenance of public facilities;
- b. costs for qualifying public facilities that will raise the level of service for the facilities, through impact fees, above the level of service that is supported by existing residents; or
- c. an expense for overhead, unless the expense is calculated pursuant to a methodology that is consistent with generally accepted cost accounting practices and the methodological standards set forth by the federal Office of Management and Budget for federal grant reimbursement; and

3. complies in each and every relevant respect with the Impact Fees Act."

With the following conditions:

- 1. All of the recommendations for implementations of the IFFP made in the IFFP documents or in the Impact Fee Analysis documents are followed by City Staff and elected officials.
- 2. If all or a portion of the IFFP or Impact Fee Analysis are modified or amended, this certification is no longer valid.
- 3. All information provided to J-U-B is assumed to be correct, complete, and accurate. This includes information provided by the City as well as outside sources.
- 4. Farmington City has agreed that the work performed in preparation of the Impact Fee Facilities Plan meets the industry Standard of Care for such plans.

Signed:

  
\_\_\_\_\_  
Gregory L. Seegmiller, P.E.  
J-U-B Engineers, Inc.

  
\_\_\_\_\_  
Date

## 1.0 INTRODUCTION

Since the original impact fee law was passed in 1995, Farmington City has utilized impact fees and connection fees to manage and improve their water system.

There have been master plans and updates completed on the system since that time. Most of the upgrades have been accomplished for both future growth projects and deficiency projects. Farmington has commissioned J-U-B Engineers, to evaluate the effectiveness of past projects and to assess for future needs.

### 1.1 Scope

The Scope of this study is:

1. Evaluate the sources of water for adequacy into the future, specifically, the existing system (2021), 10 years into the future (2031) and “at Capacity”.
2. Evaluate the water storage capacity needs into the same periods of time.
3. Review the existing distribution model for deficiencies and identify any that may arise into the same future periods.
4. Summarize the findings in a report that would include growth projections, and updated cost estimates, and assemble into an Impact Fee Facilities Plan (IFFP) for the City to adopt with their Impact Fee Analysis (IFA) to be done by an IFA consultant.

### 1.2 Growth Rate

Attempting to determine the future growth rate of a community is difficult as it has so many factors involved in foreseeing the future. An evaluation of Equivalent Residential Connections was done by Farmington City. Figure 1.2 shows the projections outlined by the Cities’ study.

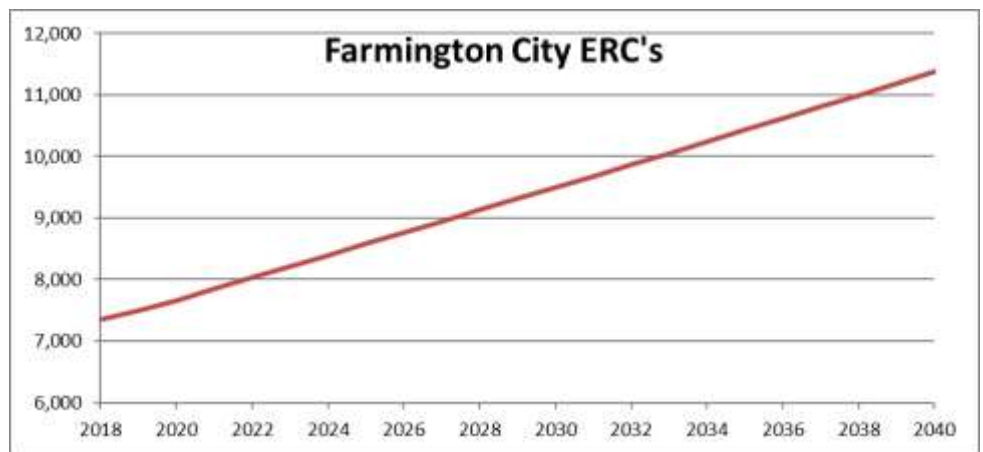


Figure 1.2 – ERC Projections

## 2.0 IMPACT FEE FACILITIES PLAN

The following are components of the water system that were identified or analyzed as part of the IFFP: service area boundary, demands, level of service, inventory and an estimate of excess capacity. Future projects needed within the next 6 to 10 years were identified and used to calculate costs included in the

IFA. Various components of the water system were analyzed to identify projects for source, storage, and distribution.

## 2.1 Service Area

In Appendix B, Figure 1 shows the service area boundary for the City along with the existing City limits. The future projects of this study include both the current city boundary and the annexation declaration for the City. The future areas are located below and shown in Figure 3.

1. East of the Bonneville Shoreline Trail and approximately 1200 south
2. North West Corner of the City
3. Between 1525 W and 1100 W and just north of the proposed West Davis Corridor

## 2.2 Demands

Demands used in the model were calculated by using existing water meter records for the past 3 years. Farmington has secondary water supplied by Benchland Irrigation District and Weber Basin Water Conservancy District. Less than 5% of connections use culinary water supplied by Farmington City for outdoor irrigation use. For water rights and distribution, the current capacities exceed the requirements of the State.

## 2.3 Level of Service

The current level of service has been defined by the State. Requirements are given for Source, Storage, and Distribution.

### 2.3.1 Source – Level of Service

Water source requirements have been defined by the State Division of Drinking Water as 800 gpd/ERU for a peak day and 146,000 gal/year/ERU. Table 2.3.1 shows the values for source based on the state requirements.

**Table 2.3.1 - System Demands**

	Required/ERU	Year 2021 7847 ERUs	Year 2031 9678 ERUs	"At Capacity" 11373 ERUs
<b>Water Rights</b>	0.45 Acft/ERU	3531 Acft	4355 Acft	5118 Acft
<b>Source Flow<sup>1</sup> (Peak Day)</b>	800 gpd/ERU	6,277,600 gpd	7,742,400 gpd	9,098,400 gpd
<b>Source Flow<sup>1</sup> (Yearly Avg)</b>	146,000 gal/yr/ERU	1,145,662,000 gal/yr	1,412,988,000 gal/yr	1,660,458,000 gal/yr
<b>Storage</b>	400 gpd/ERU	3,138,800 gpd	3,871,200 gpd	4,549,200 gpd
<b>Distribution<sup>2</sup> Peak Day</b>	620 gpd/ERU	4,865,140 gpd	6,000,360 gpd	7,051,260 gpd

Note 1: From Utah State Water rule R309-510-7

Note 2: Calculated from residential and commercial water records

### 2.3.2 Storage – Level of Service

Farmington City uses the following to define the level of service provided by their water tanks:

Equalization Storage – 3,138,800 gal (400 gal/ERC\*7,847 ERC) (per R309-510-8)

Fireflow Storage – 240,000 gal (2,000 gal/min for 2 hrs)

Emergency Storage – 4,858,862 gal (1 peak day; 0.43 gpm\*60\*24\*7,847 ERC)

### 2.3.3 Distribution – Level of Service

The distribution system LOS is defined as having pipes adequate to supply fire flow demands combined with peak day user demands. The fire flows are defined by the Fire Marshall and the Uniform Fire Code. A flow rate of 1,500 gpm for residential and 2,000 gpm for commercial and industrial areas have been defined for the distribution level of service in accordance with the 20-30-40 rule of the Division of Drinking Water.

The State Division of Drinking Water rules describe the 20-30-40 rule that sets the standard for the level of service for water systems.

20 psi pressures in all areas of the system with peak day demands and a fire flow;

30 psi pressures in all areas of the system with instantaneous flows; and

40 psi pressures in all areas of the system with only peak day demands and no fire flow.

All three conditions must be met to satisfy the State’s minimum sizing requirements.

### 2.4 Inventory

The following table is a tabulation of the lineal feet of pipe in the system. There are multiple types of pipe that are not indicated including PVC, Ductile Iron, Cast Iron, HDPE, and shot coat. Different types have been allowed over time depending upon soil conditions and material availability and economy. No attempts have been made to assess the value of the water system as current impact fee laws require the value to be determined based upon actual cost at the time of construction.

Pipe Size	Total Feet
4"	15,731
6"	126,875
8"	273,872
10"	99,326
12"	73,520
14"	3,520
16"	0
18"	3,587
20"	2,413
PRV Stations	29
Fire Hydrants	1422

### 2.5 Excess Capacity

To obtain the overall capacity of the system, three scenarios were observed: 2021 Flow; 2031 Flow; and “At Capacity” Flow. It is discussed for source, storage, and distribution below. Water rights are not discussed as they are not part of the impact fee calculation.

#### 2.5.1 Source – Excess Capacity

Farmington City has several sources of water, which include, multiple wells and one contract from Weber Basin Water. The wells are used continually throughout the year. The contract water from Weber Basin is a “use or loose” contract. The small amount of contract water is also used until the contract is filled.

Table 2.5.1 summarizes the Farmington City water sources.

**Table 2.5.1 Existing Water Sources (gpm)**

Source	Source Capacity (gpm)	Status	Available Flow (gpm)	Usable Pk Day Flow 2023	Usable Pk Day Flow 2040
Well #1	1400	Clean	1400	1400	1400
Well #C-5	250	Clean	250	250	250
Woodland	1100	Clean	1100	1100	1100
Community Center	700	Clean	700	700	700
W.B. Meter	1000	Clean	1000	1000	1000
<b>TOTAL</b>	<b>4450</b>		<b>4450</b>	<b>4450</b>	<b>4450</b>

Figure 2.1 and Figure 2.2 show the capacity of the sources in comparison to the state requirements, summarizes the sources for several recent years, and estimates future needs. The “Source Act” line on the graph shows the actual usage of the system. The “Source Required” line is based upon the amount of 800 gallons per day required by the State. This line is projected into the future to estimate when future sources will be needed. Figure 2.1 shows that the system is currently deficient for peak day source, but the well that is planned for 2019-2021 will provide 28% excess capacity to the system. Figure 2.1 also shows that addition source (gpm) will need to be added in 2032. According to Figure 2.2 there is 23% excess capacity in total source (AC-FT) at buildout.

**Figure 2.1 Water Sources (GPM)**

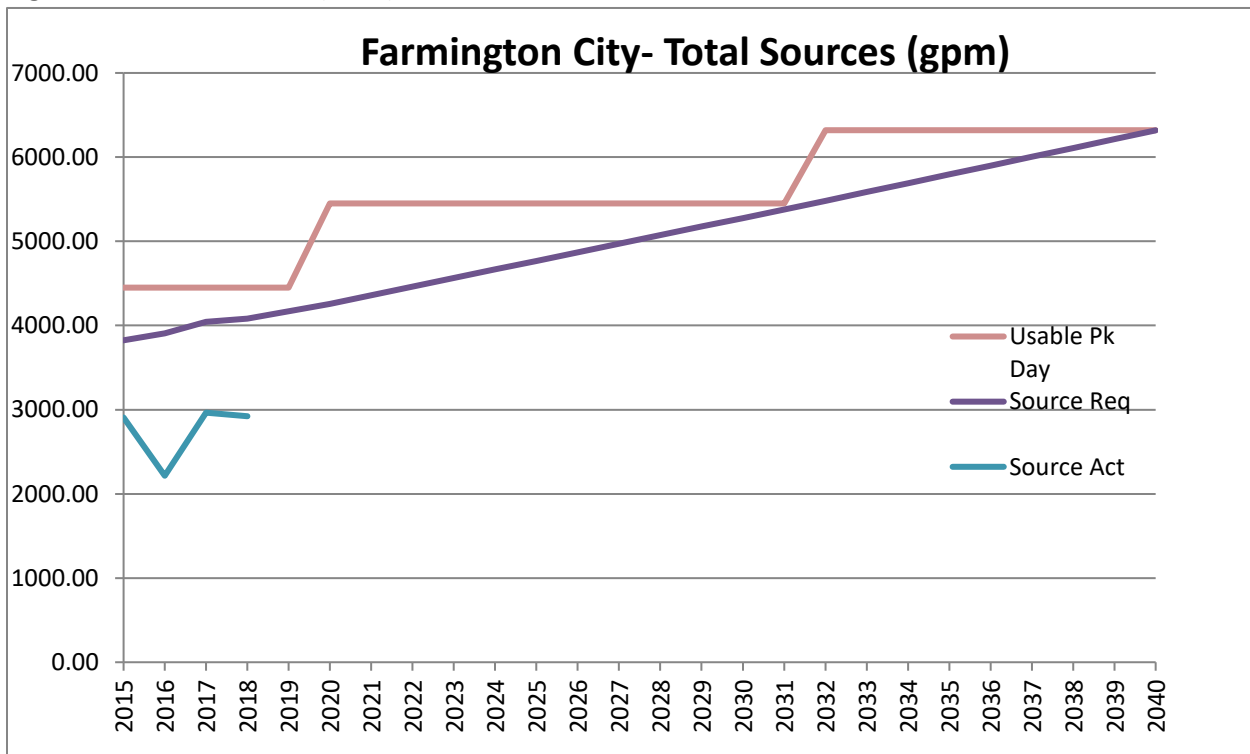




Figure 2.2 Water Sources (AC-FT)

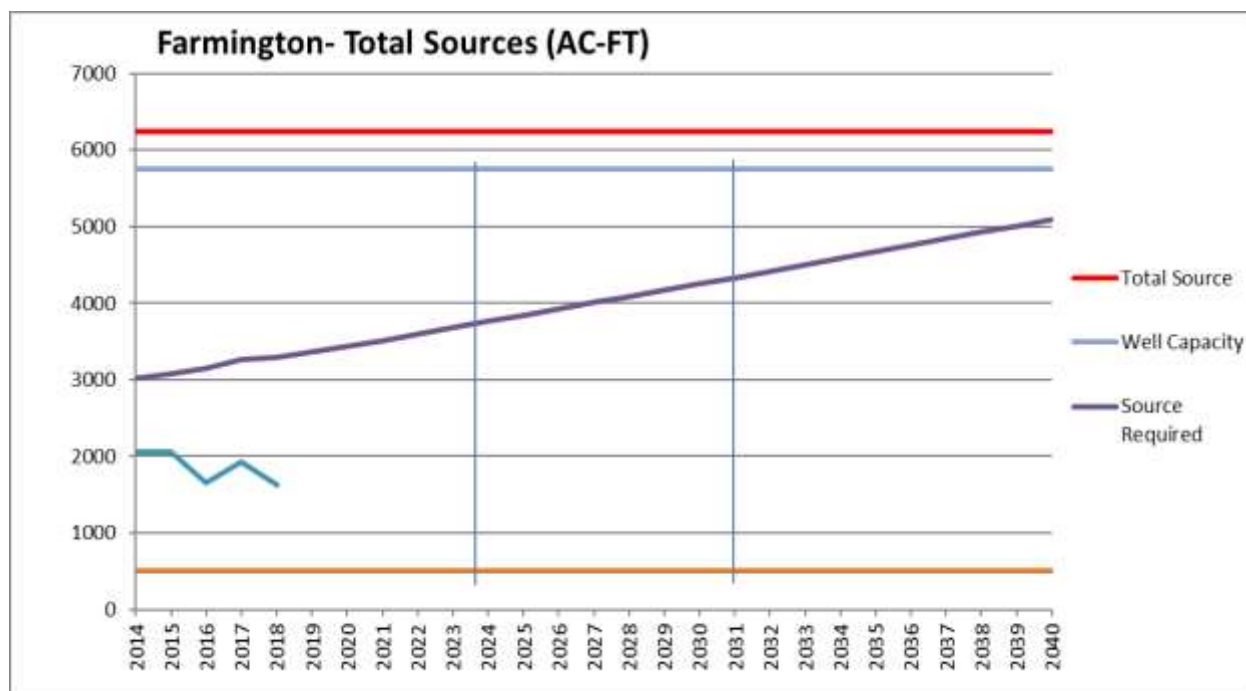


Table 2.5.2 Excess Storage Capacity

	Year 2021	Year 2031	"At Capacity"
<b>Total Storage</b>	8,450,000	10,450,000	11,950,000
<b>Less Fire Storage<sup>1</sup></b>	240,000	240,000	240,000
<b>Less Emergency<sup>2</sup></b>	4,859,129	5,992,836	7,042,042
<b>Available Storage</b>	3,350,871	4,217,164	4,667,958
<b>Equalization<sup>3</sup></b>	3,138,972	3,871,341	4,549,123
<b>% used</b>	93.7%	91.8%	97.5%
<b>% Excess Capacity</b>	6.3%	8.2%	2.5%

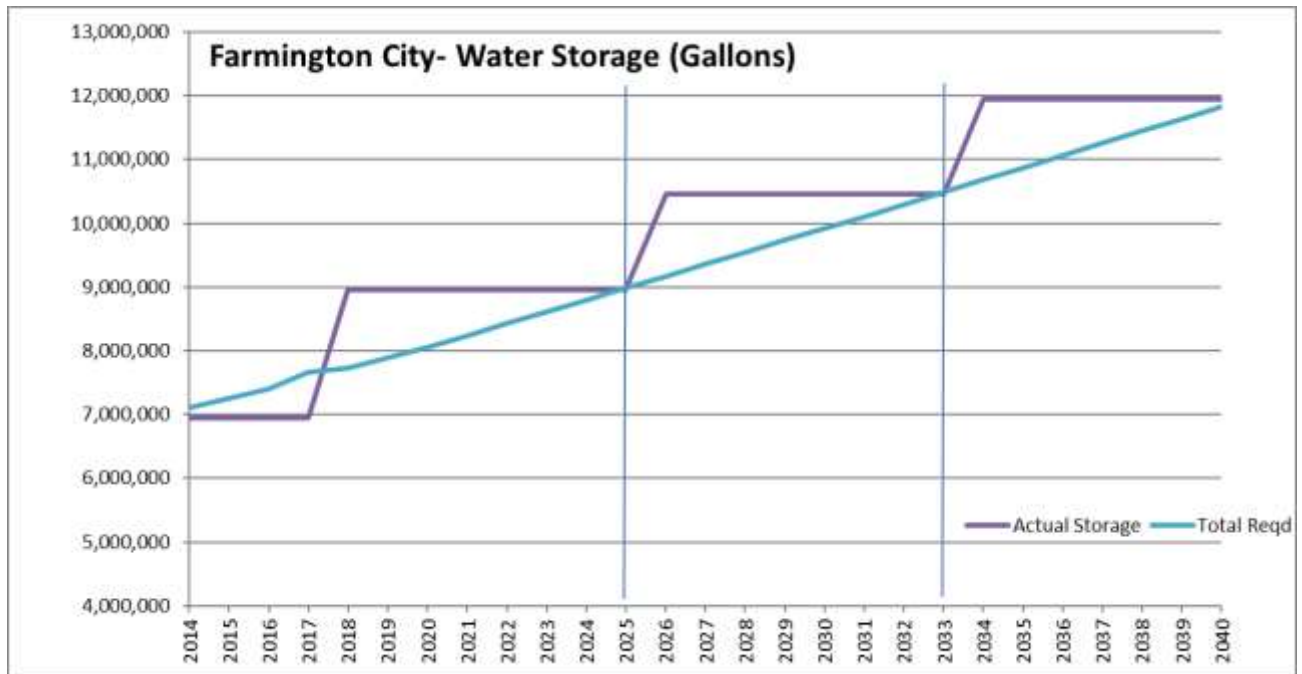
<sup>1</sup> Fire Storage = 2kgpm for 2hrs

<sup>2</sup> Emergency Storage = 1 Peak Day Volume (0.43 gpm\*ERC's\*60\*24)

<sup>3</sup> Equalization = 400 gpd/ERC

The City is currently adequate for storage requirements. Figure 2.3 and table 2.5.2 show the required storage in comparison to the actual capacity. The analysis for figure 2.3 includes the 2 MG water tank that was constructed and brought online in 2019. According to Figure 2.3, the 2 MG tank brought online in 2019 eliminated a deficiency in storage and created an excess capacity of approximately 16%. Figure 2.3 also shows that more storage will be needed by 2025 and 2033.

**Figure 2.3 Storage Improvements**



### 2.5.3 Distribution – Excess Capacity

The flow in each pipe was observed and compared to the at-capacity flow, assuming the at-capacity flow represents the highest flow in the system. The percentage of that flow was tabulated and summed for each scenario. Those flows and percentages are summarized in table 2.5.3. Based upon the undeveloped property, we assume for this study that at-capacity or build out will occur around 2040 with 11,373 ERU's.

**Table 2.5.3 - Distribution System Flow Capacity**

	Year 2021	Year 2031	At-Capacity
<b>Connections</b>	7847 ERU	9678 ERU	11373 ERU
<b>Flow</b>	3295.9 gpm	4064.9 gpm	4776.6 gpm
<b>% of At-Cap</b>	69%	85%	100%

### 2.6 Prioritization

Some of the prioritization, as mentioned earlier, is a moving target. Table A-2, in appendix A, is an attempt to identify when projects will be needed. As development occurs, the locations of the most needed projects may move. Prioritizing projects was completed to estimate the magnitude of funds needed for the future projects in the next 10 years.

### 3.0 CULINARY WATER SYSTEM COMPONENTS

Farmington City water rights, source, storage and distribution for are discussed below for the water system. Appendix B contains figures for the existing system and also the future system. Wells, Tanks and pipes are shown on these figures based upon the model and evaluation of the system.

#### 3.1 Water Rights

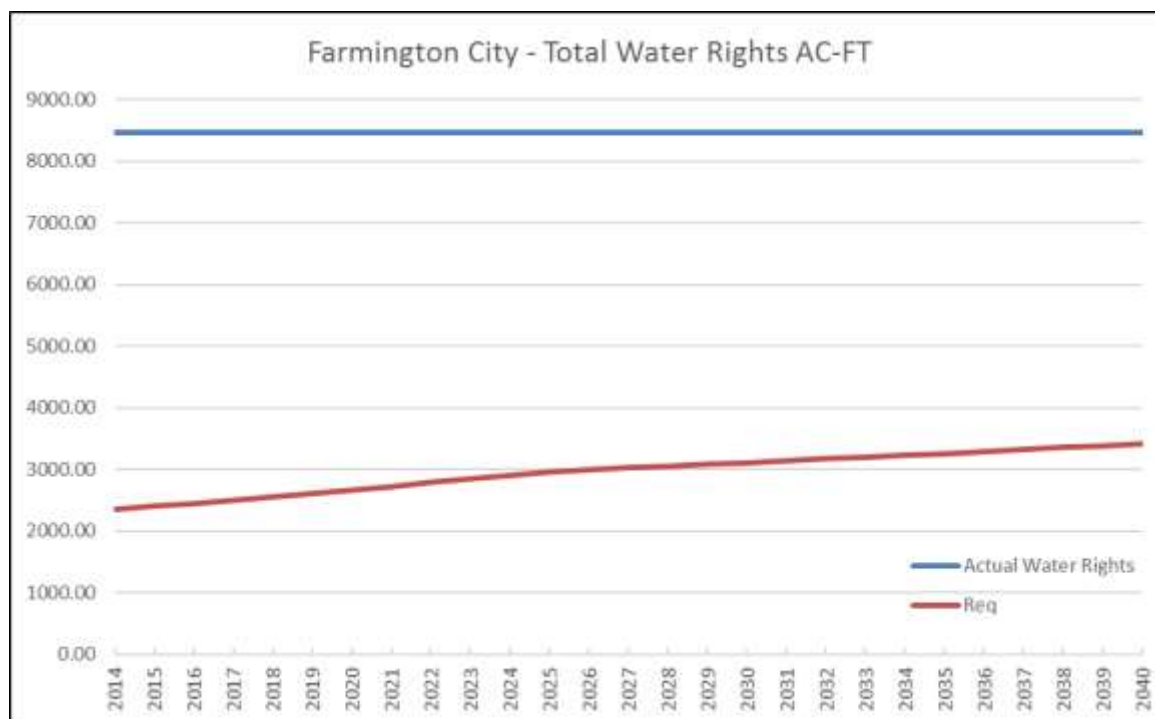
Table 3.2 shows water rights owned by the City. All rights are in good standing with the State Division of Water Rights. This information is shown for reference and not part of the IFFP nor calculated in the IFA. Farmington City currently contracts with Weber Basin to supply a portion of the City's water needs. The City has a contract with Weber Basin for 501 Acre-feet of water annually. Figure 3.1 shows the water rights "actual" vs water rights "required" for Farmington City.

**Table 3.1 - Farmington City Water Rights Summary**

WR#	Description	Flow (cfs)	Flow(gpm)	Volume (AF)	Priority Date	Proof Due
31-80	Well #1	0.8	359.0	579.17	5/9/1905	3/17/1999
31-2596		2	897.6	1447.93	5/9/1905	10/16/1989
31-5031		1.2	538.6	868.76	5/9/1905	6/30/2020
31-2597	Woodland Park	1.67	749.5	1209.02	5/9/1905	10/16/1989
31-5032		0.73	327.6	528.50	6/8/1905	9/30/2016
31-4859	Community Center	0.36	161.6	260.63	6/8/1905	7/31/2018
31-4283		1.46	655.2	1056.99	5/28/1905	4/30/2015
31-5032		0.92	412.9	666.05	6/8/1905	9/30/2016
31-5017	Well #C-5	0.54	242.4	390.94	5/28/1905	9/30/1991
31-5032	Well #3	1.99	893.1	1440.69	6/8/1905	9/30/2016
31-5239	Boyer <sup>1</sup>	6	2692.8	4343.80	5/17/1905	12/23/1988
31-3869	Wheeler	0.01	4.5	7.24	5/20/1905	10/31/2014
31-4981	Rudd Creek <sup>1</sup>	0.84	377.0	608.13	3/20/1905	N/A
31-5045	Freckleton	0.015	6.7	10.86	6/13/1905	1/13/1995
<b>TOTAL</b>		<b>18.54</b>	<b>8318.51</b>	<b>13418.73</b>		

Note 1: Surface Water Right

**Figure 3.2 Water Rights (AC-FT)**



### 3.2 Source Improvements

A description of the Farmington City sources is provided in section 2.5.1. A proposed well for 2019-2021 will provide approximately 28% excess capacity when it is brought online. A cost estimates for the proposed well in 2032 is provided in appendix A.

The City has considered a new well to meet the future source requirements. Another option may be to increase the contract water from Weber Basin. Weber Basin is currently charging \$700/AC-FT/Year for new contract block water. Weber Basin has also recently started offering a Capital Charge/Impact Fee program to purchase blocks of water based on the number of residential homes connecting to the system. The price for water is broken into two portions. A new home owner would have to pay approximately \$4,365 as part of an upfront impact fee to Weber Basin. The yearly assessment for the City would then be a fixed fee of \$120/AC-FT and a variable fee of \$50/AC-Ft. For each home utilizing this program, 0.45 AF-FT of allotted water will be granted to the City.

### 3.3 Storage Improvements

The City maintains water storage tanks throughout the system. They are summarized in section 2.5.2. This study assumes that irrigation needs remain constant due to the pressurized irrigation systems in the area. It also assumes that the fire flow requirements remain constant. Figure 2.3 shows the storage requirement vs actual storage. Based upon this information, additional storage will be needed in 2023. A cost estimate for the future storage is provided in appendix A.

### 3.4 Distribution Improvements

In preparation of this report, J-U-B consulted with the Farmington City Fire Marshall. The Fire Code indicates 2,000 gpm for commercial and 1,500 gpm for residential. The approach taken in the network model is to comply with the fire code flows (2,000/1,500 gpm) for determining the adequacy of the system.

The projects shown on the Capital Facilities Plan (Figure 2) will be needed as growth occurs. The model showed that, with existing demands, the existing pipes were mostly adequate. There are locations where the system is unable to provide 1,500 gpm fire flow. All future projects shown in the IFFP are required by the future growth and therefore eligible for impact fees.

Table A-1 (in Appendix A) summarizes the cost of the projects and assigns the sources of funds in the three categories discussed in section 4.0, below.



### 4.0 CAPITAL FACILITIES PROJECTS

The following are differences between a Capital Facilities Plan and an Impact Fee Facilities Plan: IFFP projects can only reach out 6 to 10 years into the future and only apply to future growth needs. Capital Facility Plans can include other time horizons so long as the funding comes from other sources. Figure 3 in appendix B includes all proposed projects for the water system.

The project summary table A-1 in Appendix A defines the percentage of each project considered part of the IFFP. The total project costs are broken into three areas of responsibilities.

The first is “Existing Contribution.” This category accounts for the percentage of each project that would be used for the existing system and cannot be paid for with impact fees.

The second category is the “10-year Future Growth Contribution.” This category would be used for impact fee calculations.

The third is for “Growth Beyond 10 Year.” This category is the percentage of each project that is not being contributed to the existing system or needed in the next 10 years. It is anticipated that these project percentages would be applied to future IFFP calculations.

The column for “New Development” is either the total project cost or if there is a developer base cost, it is the total project cost minus the developer base cost.

The column for “Developer Base Cost” accounts for infrastructure needs for the development. The City may require upgrades to the infrastructure for the development which may be paid for using impact fees.

Table A-2 proposes a timeframe for each project for the next 10 years. This is done to help gauge the demand on funds and possible need of other funding sources. Efforts have been made to assign the projects to the time and location where the project may be needed. The priority for many of the projects may shift depending upon where development is occurring. Most of the future growth will happen in new areas requiring infrastructure to be extended to serve them. This will cause many of the proposed projects be constructed before growth requires the full capacity of the project.

## **5.0 CONCLUSIONS AND RECOMMENDATIONS**

A summary of the costs for the 10 projects analyzed is included in the summary table A-1 in Appendix A. The total cost of the projects is about \$10.7 Million.

Our recommendations are as follows:

1. The City should pursue a plan that will provide funding for these projects. This plan should include several possibilities: Impact fees adoption or updates, grants, loans and development agreements.
2. The City council needs to be apprised often of these projects and their need. This may include an annual update while working on the budget.
3. The City needs to secure a financial consultant who can use information from this study and calculate the legally acceptable impact fees that would then be adopted by the City.
4. We recommend that Farmington City share this plan with other adjacent Cities and utilities within the Cities’ service area to coordinate projects that may affect several entities. These include, but are not limited to: South Davis Sewer District, Weber Basin, Benchland Irrigation District, Centerville, UDOT, Davis County, Fruit Heights and Kaysville, Gas, Phone, Power, and Internet.
5. We recommend that the City establish a fund for at least the purchase of Right-of-way as properties change hands over time, in accordance with this Master Plan
6. The City attorney may need to confirm these recommendations and follow up with any additional recommendations.
7. We recommend that these projects and fees be reviewed at least every other year, to keep them current with City needs.
8. We recommend not seeking a reduction in source required from the State of Utah.

## **APPENDIX A – COST ESTIMATES**

Table A-1



Project Number	Project Location	Project Description	New Development	Developer Base Cost	Existing Contribution	10--Yr Growth Contribution	Growth Beyond 10 Year	IFFP Cost
CW-01	950 N to Clark Lane along 1500 W	Future Buisness Park: 10" Loop	\$71,605	\$711,043	0.00%	80.00%	20.00%	\$57,284
CW-02	Park Lane I-15	16" Park Lane I-15 Crossing	\$2,366,691		20.00%	80.00%	0.00%	\$1,893,353
CW-03	1100 N to 750 N along 700 W	12" loop	\$33,380	\$245,129	10.00%	90.00%	0.00%	\$30,042
CW-04	600 N to 200 S; Mainstreet to 200 E	Replace 4" with 8"	\$1,424,065		50.00%	50.00%	0.00%	\$712,033
CW-05	1525 W to 950 w along Glover Lane	10" Loop	\$44,071	\$548,576	10.00%	90.00%	0.00%	\$39,664
CW-06	Northridge Rd, 1400 N, 1300 N	New Pressure Reducing Valve Stations	\$382,645		60.00%	30.00%	10.00%	\$114,793.35
CW-07	Just East of Northbound exit of HWY 89 to Main Street	New Well	\$1,636,000		0.00%	100.00%	0.00%	\$1,636,000
CW-08	South East Corner of the City	Distribution piping	\$143,890	\$642,626	0.00%	0.00%	100.00%	\$0
CW-09	South East Corner of the City	New Well	\$1,749,000		0.00%	0.00%	100.00%	\$0
CW-10	South East Corner of the City	New 1.5 MG water tank	\$2,272,000		0.00%	0.00%	100.00%	\$0
CW-11	650 N 150 E (Near C-1 Tank)	New 2 MG water tank	\$2,932,000		0.00%	85.00%	15.00%	\$2,492,200
TOTAL ESTIMATES			\$10,123,347	\$2,147,374				\$6,975,369

Notes: "New Development" indicates System Improvements. "Developer Base Cost" indicates projects improvements that may need oversizing for future development outside of the proposed development. Some assumptions have been made on minimum pipe sizing, however, the developer must take care of their development inspite of these assumptions.



Farmington City - Culinary Water IFFP  
 Project Schedule  
 Revision Date: March 12, 2021



Table A-2

Proj#	Project Location	Project Description	2019	2020	2021	2022	2023	2024	2025	2026	2027	2028	Beyond
CW-01	950 N to Clark Lane along 1500 W	Future Buisness Park: 10" Loop			\$782,648								
CW-02	Park Lane I-15	16" Park Lane I-15 Crossing				\$2,366,691							
CW-03	1100 N to 750 N along 700 W	12" loop					\$278,509						
CW-04	600 N to 200 S; Mainstreet to 200 E	Replace 4" with 8"						\$1,424,065					
CW-05	1525 W to 950 w along Glover Lane	10" Loop								\$592,647			
CW-06	Northridge Rd, 1400 N, 1300 N	New Pressure Reducing Valve Stations				\$382,645							
CW-07	Just East of Northbound exit of HWY 89 to Main Street	New Well		\$1,636,000									
CW-08	South East Corner of the City	Distribution piping											\$786,516
CW-09	South East Corner of the City	New Well											\$1,749,000
CW-10	South East Corner of the City	New 1.5 MG water tank											\$2,272,000
CW-11	650 N 150 E (Near C-1 Tank)	New 2 MG water tank							\$2,932,000				
TOTAL			\$0	\$1,636,000	\$782,648	\$2,749,336	\$278,509	\$1,424,065	\$2,932,000	\$592,647	\$0	\$0	\$4,807,516

TOTAL ALL PROJECTS \$15,202,721

## Opinion of Probable Cost

**Project:** Future Buisness Park: 10" Loop  
**Location:** 950 N to Clark Lane along 1500 W  
**Client:** Farmington Water  
**J-U-B Project No:** 55-17-033



J-U-B ENGINEERS, INC.



THE LANGDON GROUP  
A J-U-B COMPANY



GATEWAY MAPPING INC.  
A J-U-B COMPANY

OTHER J-U-B COMPANIES

**Project #:** CW-01

Item #	Description	Quantity	Unit	Unit Price	Amount
1	Mobilization	1	LS	\$58,000.00	\$58,000.00
2	Traffic Control	1	LS	\$11,500.00	\$11,500.00
3	SWPPP	1	LS	\$6,000.00	\$6,000.00
4	Furnish, Place and Compact Imported Pipe Foundation Material	473	TONS	\$25.00	\$11,825.00
5	Furnish, Place and Compact Imported Pipe Bedding and Initial Backfill Material	5678	TONS	\$20.00	\$113,560.00
6	Furnish, Place and Compact Imported Final Backfill Material	4731	TONS	\$18.00	\$85,158.00
7	Furnish and Install 10" C-900 PVC Pipe	7115	LF	\$47.00	\$334,405.00
8	Furnish and Install 12" Butterfly Valve	2	EA	\$2,400.00	\$4,800.00
9	Furnish and Install 10" Gate Valve	8	EA	\$1,500.00	\$12,000.00
10	Furnish and Install 10" Cross	1	EA	\$1,000.00	\$1,000.00
11	Furnish and Install 12" x 10" Cross	1	EA	\$1,200.00	\$1,200.00
12	Furnish and Install 10" Tee	1	EA	\$1,000.00	\$1,000.00
13	Furnish and Install 12" x 10" Tee	1	EA	\$1,200.00	\$1,200.00
14	Connect to Existing 10" Waterline	3	EA	\$1,500.00	\$4,500.00
15	Connect to Existing 12" Waterline	3	EA	\$1,500.00	\$4,500.00
16	Contingency (10%)	1	LS	\$66,000.00	\$66,000.00
17	Engineering (10%)	1	LS	\$66,000.00	\$66,000.00
<b>Total:</b>					<b>\$782,648.00</b>

# Opinion of Probable Cost

**Project:** 16" Park Lane I-15 Crossing

**Location:** Park Lane I-15

**Client:** Farmington Water

**J-U-B Project No:** 55-17-033



J-U-B ENGINEERS, INC.



THE LANGDON GROUP  
A J-U-B COMPANY



GATEWAY MAPPING INC.  
A J-U-B COMPANY

OTHER J-U-B COMPANIES

## Project #: CW-02

Item #	Description	Quantity	Unit	Unit Price	Amount
1	Mobilization	1	LS	\$175,000.00	\$175,000.00
2	Traffic Control	1	LS	\$35,000.00	\$35,000.00
3	SWPPP	1	LS	\$18,000.00	\$18,000.00
4	Saw Cutting	5716	LF	\$1.50	\$8,574.00
5	Remove and Dispose of Existing Asphalt	8556	SF	\$0.50	\$4,278.00
6	Restore 3" Asphalt Surface	8556	SF	\$4.00	\$34,224.00
7	Furnish, Place and Compact Imported Pipe Foundation Material	238	TONS	\$25.00	\$5,950.00
8	Furnish, Place and Compact Imported Pipe Bedding and Initial Backfill Material	2851	TONS	\$20.00	\$57,020.00
9	Furnish, Place and Compact Imported Road Base	2376	TONS	\$25.00	\$59,400.00
10	Furnish and Install 16" C-900 PVC Pipe	3573	LF	\$65.00	\$232,245.00
11	Bore 16" C-900 PVC Pipe (HWY 89, I-15, RR)	1700	LF	\$300.00	\$510,000.00
12	Furnish and Install 16" Butterfly Valve	2	EA	\$3,000.00	\$6,000.00
13	Furnish and Install 8" Gate Valve	1	EA	\$1,500.00	\$1,500.00
14	Furnish and Install 10" Gate Valve	5	EA	\$1,800.00	\$9,000.00
15	Furnish and Install 16" Cross	1	EA	\$1,500.00	\$1,500.00
16	Furnish and Install 10" Tee	1	EA	\$1,000.00	\$1,000.00
17	Furnish and Install 16" x 8" Tee	1	EA	\$1,500.00	\$1,500.00
18	Furnish and Install 16" x 10" Reducer	3	EA	\$1,500.00	\$4,500.00
19	Connect to Existing 8" Waterline	1	EA	\$1,500.00	\$1,500.00
20	Connect to Existing 10" Waterline	2	EA	\$1,500.00	\$3,000.00
21	Remove plug and Connect to Existing 16" Waterline	1	EA	\$1,500.00	\$1,500.00
22	Road and Railroad Crossings	1	LS	\$800,000.00	\$800,000.00
23	Contingency (10%)	1	LS	\$198,000.00	\$198,000.00
24	Engineering (10%)	1	LS	\$198,000.00	\$198,000.00
<b>Total:</b>					<b>\$2,366,691.00</b>

## Opinion of Probable Cost

**Project:** 12" loop  
**Location:** 1100 N to 750 N along 700 W  
**Client:** Farmington Water  
**J-U-B Project No:** 55-17-033



J-U-B ENGINEERS, INC.



THE  
LANGDON  
GROUP  
A J-U-B COMPANY



GATEWAY  
MAPPING  
INC.  
A J-U-B COMPANY

OTHER J-U-B COMPANIES

### Project #: CW-03 (Upsize Cost)

Item #	Description	Quantity	Unit	Unit Price	Amount
1	Mobilization	1	LS	\$19,500.00	\$19,500.00
2	Traffic Control	1	LS	\$4,000.00	\$4,000.00
3	SWPPP	1	LS	\$2,000.00	\$2,000.00
4	Furnish, Place and Compact Imported Pipe Foundation Material	169	TONS	\$25.00	\$4,225.00
5	Furnish, Place and Compact Imported Pipe Bedding and Initial Backfill Material	2025	TONS	\$20.00	\$40,500.00
6	Furnish, Place and Compact Imported Final Backfill Material	1688	TONS	\$18.00	\$30,384.00
7	Furnish and Install 12" C-900 PVC Pipe	2538	LF	\$50.00	\$126,900.00
8	Connect to Existing 12" Waterline	2	EA	\$1,500.00	\$3,000.00
9	Contingency (10%)	1	LS	\$24,000.00	\$24,000.00
10	Engineering (10%)	1	LS	\$24,000.00	\$24,000.00
<b>Total:</b>					<b>\$278,509.00</b>

## Opinion of Probable Cost

**Project:** Replace 4" with 8"  
**Location:** 600 N to 200 S; Mainstreet to 200 E  
**Client:** Farmington Water  
**J-U-B Project No:** 55-17-033



J-U-B ENGINEERS, INC.



OTHER J-U-B COMPANIES

**Project #: CW-04**

Item #	Description	Quantity	Unit	Unit Price	Amount
1	Mobilization	1	LS	\$130,000.00	\$130,000.00
2	Traffic Control	1	LS	\$40,000.00	\$40,000.00
3	SWPPP	1	LS	\$15,000.00	\$15,000.00
4	Saw Cutting	9400	LF	\$2.50	\$23,500.00
5	Remove and Dispose of Existing Asphalt	25020	SF	\$0.50	\$12,510.00
6	Restore 3" Asphalt Surface	25020	SF	\$4.00	\$100,080.00
7	Remove 12" Concrete (From old Lincoln Highway)	3650	LF	\$75.00	\$273,750.00
8	Furnish, Place and Compact Imported Pipe Foundation Material	242	TONS	\$25.00	\$6,050.00
9	Furnish, Place and Compact Imported Pipe Bedding and Initial Backfill Material	2905	TONS	\$20.00	\$58,100.00
10	Furnish, Place and Compact Imported Road Base	2421	TONS	\$25.00	\$60,525.00
11	Furnish and Install 12" C-900 PVC Pipe	3640	LF	\$50.00	\$182,000.00
12	Furnish and Install 8" C-900 PVC Pipe	4700	LF	\$40.00	\$188,000.00
13	Furnish and Install 12" Gate Valve	10	EA	\$2,000.00	\$20,000.00
14	Furnish and Install 8" Gate Valve	19	EA	\$1,500.00	\$28,500.00
15	Furnish and Install 8" x 6" Cross	1	EA	\$950.00	\$950.00
16	Furnish and Install 8" Cross	2	EA	\$950.00	\$1,900.00
17	Furnish and Install 8" Tee	12	EA	\$950.00	\$11,400.00
18	Furnish and Install 12" x 8" Reducer	8	EA	\$1,500.00	\$12,000.00
19	Furnish and Install 8" x 6" Reducer	4	EA	\$950.00	\$3,800.00
20	Connect to Existing 6" Waterline	3	EA	\$1,500.00	\$4,500.00
21	Connect to Existing 8" Waterline	9	EA	\$1,500.00	\$13,500.00
22	Contingency (10%)	1	LS	\$119,000.00	\$119,000.00
23	Engineering (10%)	1	LS	\$119,000.00	\$119,000.00
<b>Total:</b>					<b>\$1,424,065.00</b>

## Opinion of Probable Cost

**Project:** 10" Loop  
**Location:** 1525 W to 950 w along Glover Lane  
**Client:** Farmington Water  
**J-U-B Project No:** 55-17-033



J-U-B ENGINEERS, INC.



THE  
LANGDON  
GROUP  
A J-U-B COMPANY



GATEWAY  
MAPPING  
INC.  
A J-U-B COMPANY

OTHER J-U-B COMPANIES

**Project #:** CW-05

Item #	Description	Quantity	Unit	Unit Price	Amount
1	Mobilization	1	LS	\$51,000.00	\$51,000.00
2	Traffic Control	1	LS	\$10,000.00	\$10,000.00
3	SWPPP	1	LS	\$5,000.00	\$5,000.00
4	Saw Cutting	5716	LF	\$1.50	\$8,574.00
5	Remove and Dispose of Existing Asphalt	8556	SF	\$0.50	\$4,278.00
6	Restore 3" Asphalt Surface	8556	SF	\$4.00	\$34,224.00
7	Furnish, Place and Compact Imported Pipe Foundation Material	289	TONS	\$25.00	\$7,225.00
8	Furnish, Place and Compact Imported Pipe Bedding and Initial Backfill Material	3474	TONS	\$20.00	\$69,480.00
9	Furnish, Place and Compact Imported Road Base	2895	TONS	\$25.00	\$72,375.00
10	Furnish and Install 10" C-900 PVC Pipe	4353	LF	\$47.00	\$204,591.00
12	Furnish and Install 8" Gate Valve	1	EA	\$1,500.00	\$1,500.00
13	Furnish and Install 10" Gate Valve	8	EA	\$1,800.00	\$14,400.00
14	Furnish and Install 10" 90° Bend	1	EA	\$1,000.00	\$1,000.00
16	Furnish and Install 10" Tee	1	EA	\$1,000.00	\$1,000.00
17	Furnish and Install 10" x 8" Tee	2	EA	\$1,000.00	\$2,000.00
18	Connect to Existing 8" Waterline	1	EA	\$1,500.00	\$1,500.00
19	Connect to Existing 10" Waterline	3	EA	\$1,500.00	\$4,500.00
20	Contingency (10%)	1	LS	\$50,000.00	\$50,000.00
21	Engineering (10%)	1	LS	\$50,000.00	\$50,000.00
<b>Total:</b>					<b>\$592,647.00</b>

## Opinion of Probable Cost

**Project:** New Pressure Reducing Valve Stations

**Location:** Northridge Rd, 1400 N, 1300 N

**Client:** Farmington Water

**J-U-B Project No:** 55-17-033



J-U-B ENGINEERS, INC.



THE  
LANGDON  
GROUP  
A J-U-B COMPANY



GATEWAY  
MAPPING  
INC.  
A J-U-B COMPANY

OTHER J-U-B COMPANIES

**Project #:** CW-06

Item #	Description	Quantity	Unit	Unit Price	Amount
1	Mobilization	1	LS	\$36,000.00	\$36,000.00
2	Traffic Control	1	LS	\$25,500.00	\$25,500.00
3	SWPPP	1	LS	\$5,000.00	\$5,000.00
4	Saw Cutting	414	LF	\$1.50	\$621.00
5	Remove and Dispose of Existing Asphalt	621	SF	\$0.50	\$310.50
6	Restore 3" Asphalt Surface	621	SF	\$4.00	\$2,484.00
7	Furnish, Place and Compact Imported Pipe Foundation Material	14	TONS	\$25.00	\$350.00
8	Furnish, Place and Compact Imported Pipe Bedding and Initial Backfill Material	165	TONS	\$20.00	\$3,300.00
9	Furnish, Place and Compact Imported Road Base	138	TONS	\$25.00	\$3,450.00
10	Furnish and Install 10" C-900 PVC Pipe	207	LF	\$47.00	\$9,729.00
11	Furnish and Install 10" Gate Valve	3	EA	\$1,800.00	\$5,400.00
12	Connect to Existing 10" Waterline	1	EA	\$1,500.00	\$1,500.00
13	Furnish and Install/Replace PRV Station	3	EA	\$75,000.00	\$225,000.00
15	Contingency (10%)	1	LS	\$32,000.00	\$32,000.00
16	Engineering (10%)	1	LS	\$32,000.00	\$32,000.00
<b>Total:</b>					<b>\$382,644.50</b>

Opinion of Probable Cost

**Project:** New Well  
**Location:** Just East of Northbound exit of HWY 89 to Main Street  
**Client:** Farmington Water  
**J-U-B Project No:** 55-17-033



**Project #:** CW-07

Item #	Description	Quantity	Unit	Unit Price	Amont
1	Mobilization	1	LS	\$125,000.00	\$125,000.00
2	Dig Well & Casing	1	LS	\$670,000.00	\$670,000.00
3	Pump House and Pumps	1	LS	\$567,000.00	\$567,000.00
4	Contingency (10%)	1	LS	\$137,000.00	\$137,000.00
5	Engineering (10%)	1	LS	\$137,000.00	\$137,000.00
Total:					\$1,636,000.00



## Opinion of Probable Cost

**Project:** Distribution piping  
**Location:** South East Corner of the City  
**Client:** Farmington Water  
**J-U-B Project No:** 55-17-033



J-U-B ENGINEERS, INC.



OTHER J-U-B COMPANIES

**Project #:** CW-08

Item #	Description	Quantity	Unit	Unit Price	Amount
1	Mobilization	1	LS	\$57,000.00	\$57,000.00
2	Traffic Control	1	LS	\$15,000.00	\$15,000.00
3	SWPPP	1	LS	\$8,000.00	\$8,000.00
4	Furnish, Place and Compact Imported Pipe Foundation Material	450	TONS	\$25.00	\$11,250.00
5	Furnish, Place and Compact Imported Pipe Bedding and Initial Backfill Material	5402	TONS	\$20.00	\$108,040.00
6	Furnish, Place and Compact Imported Final Backfill Material	4502	TONS	\$18.00	\$81,036.00
7	Furnish and Install 10" C-900 PVC Pipe	6770	LF	\$47.00	\$318,190.00
8	Furnish and Install 10" Gate Valve	4	EA	\$1,500.00	\$6,000.00
9	Furnish and Install PRV Station	1	EA	\$50,000.00	\$50,000.00
10	Contingency (10%)	1	LS	\$66,000.00	\$66,000.00
11	Engineering (10%)	1	LS	\$66,000.00	\$66,000.00
<b>Total:</b>					<b>\$786,516.00</b>

Opinion of Probable Cost

**Project:** New Well  
**Location:** South East Corner of the City  
**Client:** Farmington Water  
**J-U-B Project No:** 55-17-033



J-U-B ENGINEERS, INC.



THE  
LANGDON  
GROUP



GATEWAY  
MAPPING  
INC.

OTHER J-U-B COMPANIES

**Project #:** CW-09

Item #	Description	Quantity	Unit	Unit Price	Amount
1	Mobilization	1	LS	\$145,000.00	\$145,000.00
2	Dig Well & Casing	1	LS	\$670,000.00	\$670,000.00
3	Pump House and Pumps	1	LS	\$567,000.00	\$567,000.00
4	Pilot dig	1	LS	\$75,000.00	\$75,000.00
5	Contingency (10%)	1	LS	\$146,000.00	\$146,000.00
6	Engineering (10%)	1	LS	\$146,000.00	\$146,000.00
Total:					\$1,749,000.00

## Opinion of Probable Cost

**Project:** New 1.5 MG water tank  
**Location:** South East Corner of the City  
**Client:** Farmington Water  
**J-U-B Project No:** 55-17-033



J-U-B ENGINEERS, INC.



**Project #:** CW-10

Item #	Description	Quantity	Unit	Unit Price	Amount
1	Mobilization	1	LS	\$220,000.00	\$220,000.00
2	SWPPP	1	LS	\$22,000.00	\$22,000.00
3	2 MG tank	1.5	MG	\$1.10	\$1,650,000.00
4	Contingency (10%)	1	LS	\$190,000.00	\$190,000.00
5	Engineering (10%)	1	LS	\$190,000.00	\$190,000.00
Total:					\$2,272,000.00

## Opinion of Probable Cost

**Project:** New 2 MG water tank  
**Location:** 650 N 150 E (Near C-1 Tank)  
**Client:** Farmington Water  
**J-U-B Project No:** 55-17-033



J-U-B ENGINEERS, INC.



**Project #:** CW-11

Item #	Description	Quantity	Unit	Unit Price	Amount
1	Mobilization	1	LS	\$220,000.00	\$220,000.00
2	SWPPP	1	LS	\$22,000.00	\$22,000.00
3	2 MG tank	2	MG	\$1.10	\$2,200,000.00
4	Contingency (10%)	1	LS	\$245,000.00	\$245,000.00
5	Engineering (10%)	1	LS	\$245,000.00	\$245,000.00
Total:					\$2,932,000.00

Opinion of Probable Cost

Project: New Well  
Location: Unknown  
Client: Farmington Water  
J-U-B Project No: 55-17-033

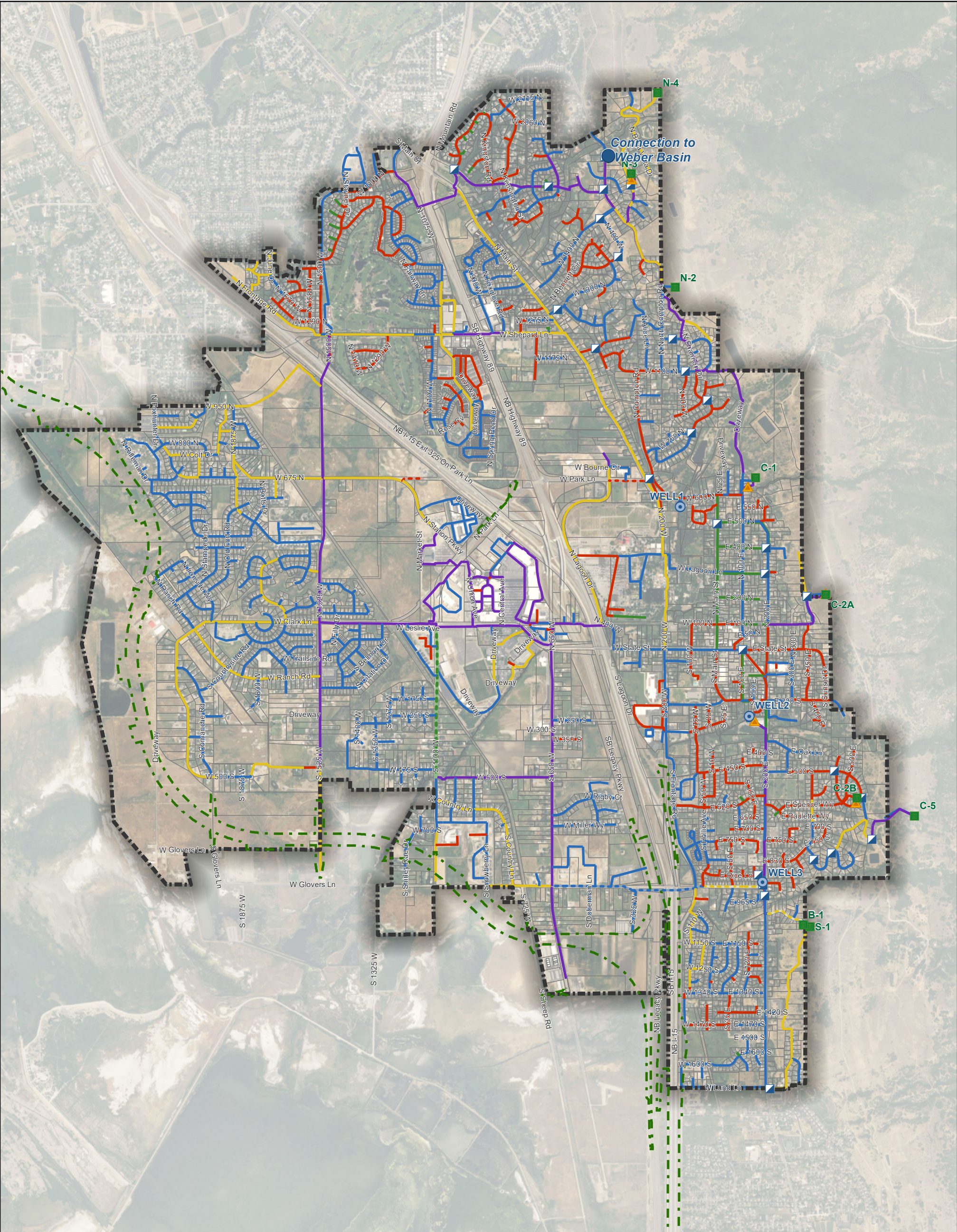


Project #: CW-12

Item #	Description	Quantity	Unit	Unit Price	Amont
1	Mobilization	1	LS	\$145,000.00	\$145,000.00
2	Dig Well & Casing	1	LS	\$670,000.00	\$670,000.00
3	Pump House and Pumps	1	LS	\$567,000.00	\$567,000.00
4	Pilot dig	1	LS	\$75,000.00	\$75,000.00
5	Contingency (10%)	1	LS	\$146,000.00	\$146,000.00
6	Engineering (10%)	1	LS	\$146,000.00	\$146,000.00
Total:					\$1,749,000.00

## **APPENDIX B – FIGURES**





# Farmington

## Culinary Water

### Existing Pipe System

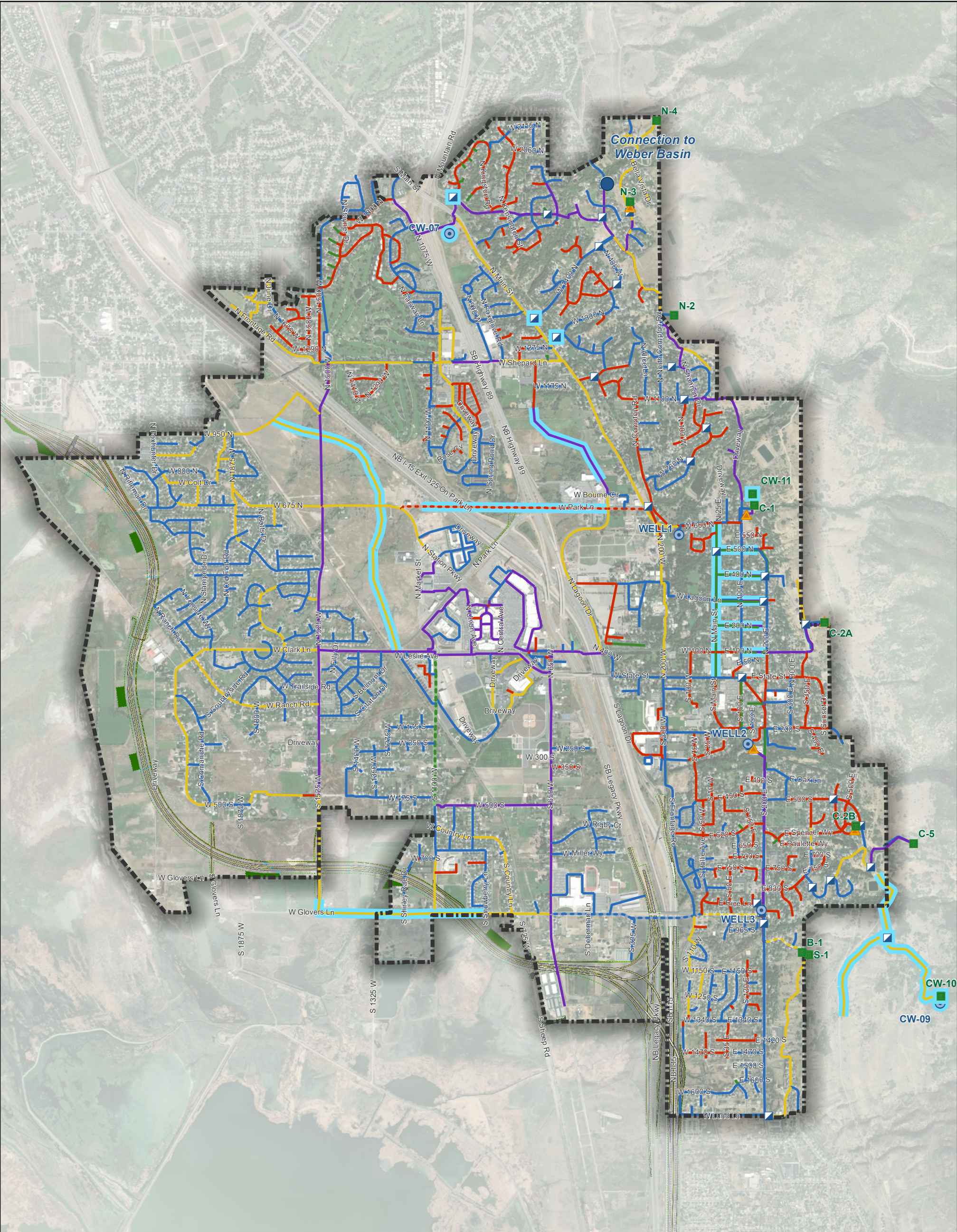
Figure 1

#### Legend

- |  |                        |  |     |  |     |
|--|------------------------|--|-----|--|-----|
|  | West Davis Corridor    |  | 4"  |  | 14" |
|  | Farmington City Limits |  | 6"  |  | 16" |
|  | Wells                  |  | 8"  |  | 18" |
|  | Tanks                  |  | 10" |  | 20" |
|  | Pumps                  |  | 12" |  |     |
|  | PRVs                   |  |     |  |     |







# Farmington

## Culinary Water

### Future Pipe System

Figure 2



J-U-B ENGINEERS, INC.



THE LANGDON GROUP  
a J-U-B Company



GATEWAY MAPPING INC.  
a J-U-B Company

#### Legend

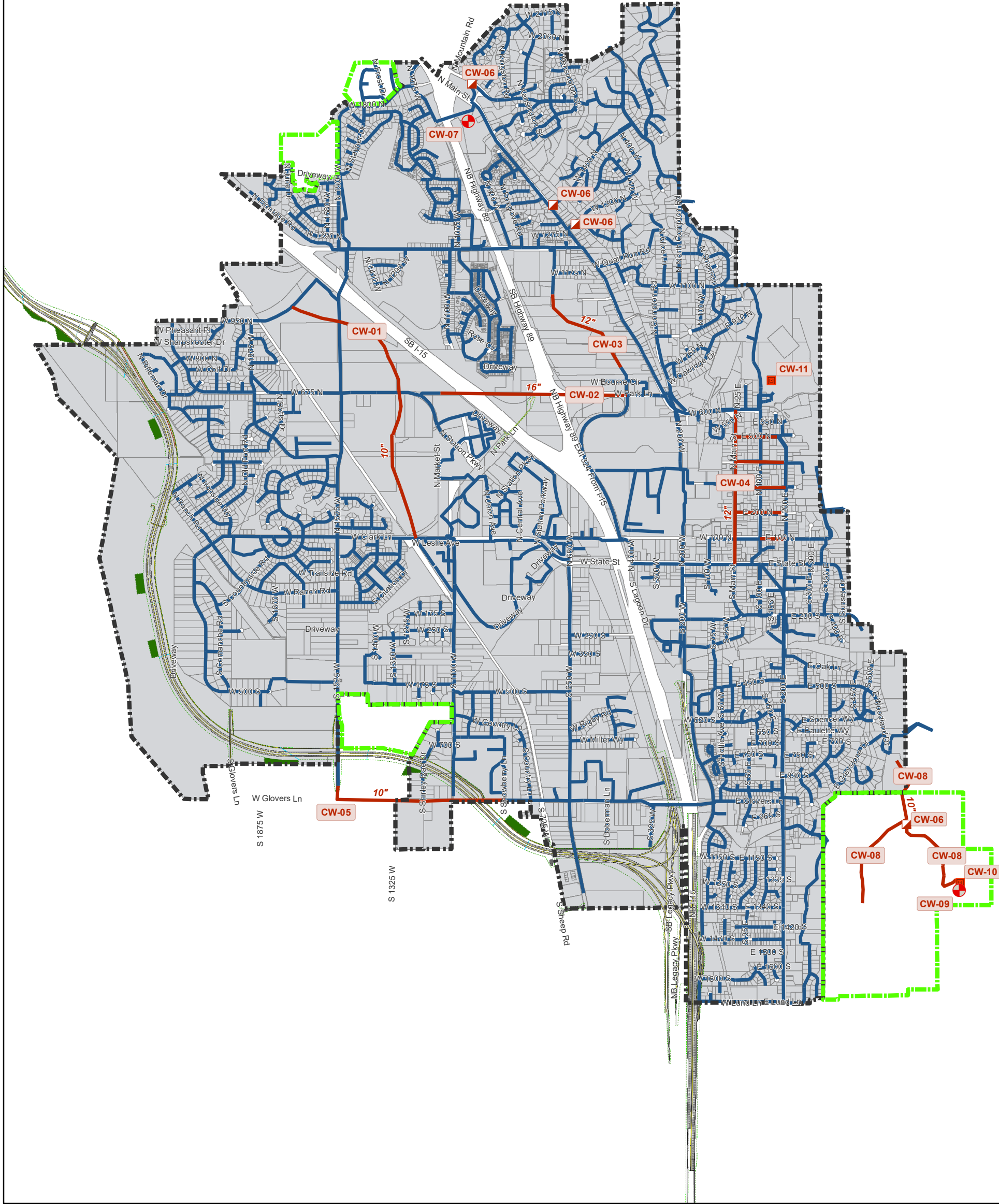
- Tanks
- Wells
- Future Wells
- Pumps
- PRVs
- Farmington City Limits

- 4"
- 6"
- 8"
- 10"
- 12"
- 14"
- 16"
- 18"
- 20"
- Future Projects



0 0.5 1 Miles





# Farmington Culinary Water Capital Facilities Plan

Figure 3

## Legend



Farmington Annexation Limits

Farmington City Limits



Future Well



Future Tanks



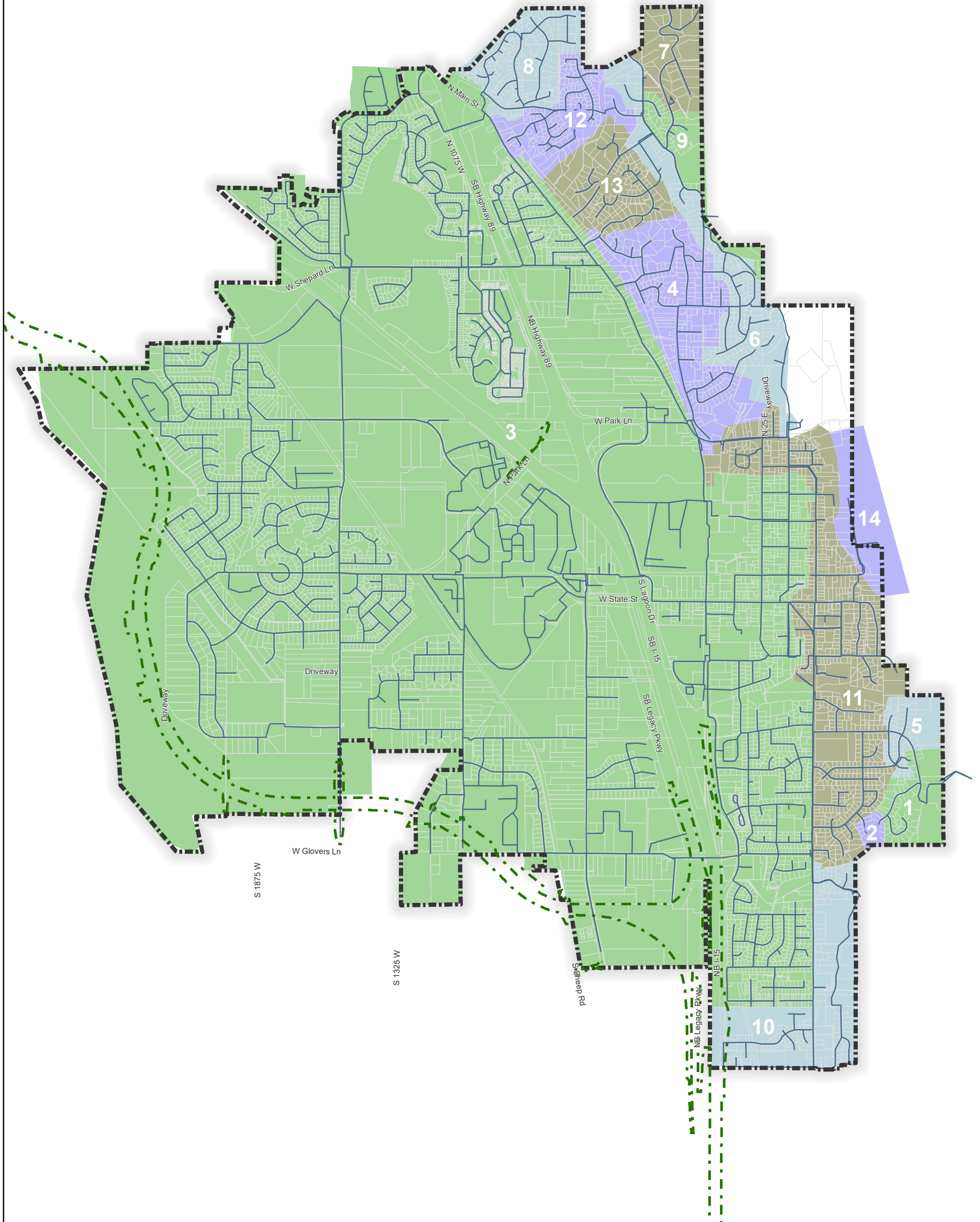
Future PRVs

Future Projects

Existing Pipes



Project Number



# Farmington

## Culinary Water Pressure Zones

Figure 4

### Legend

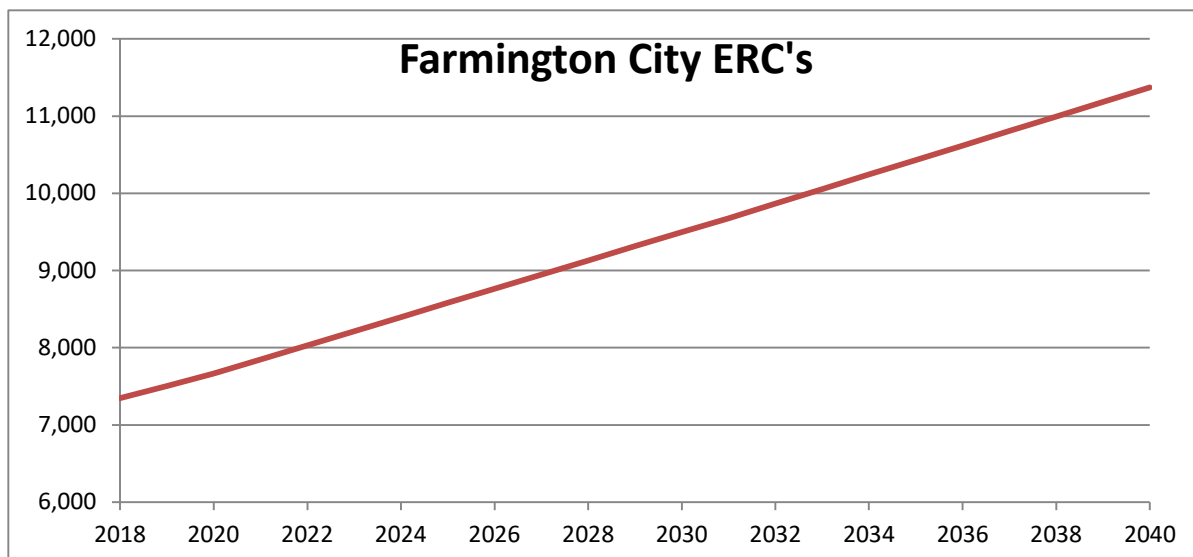
- West Davis Corridor
- Existing Pipes
- Farmington City Limits

## **APPENDIX C – DATA/DOCUMENTATION**

**Farmington City**  
**Water Impact Fee Facilities Plan**  
**Growth Projections**  
**Revision Date: January 2021**

**TABLE C1**

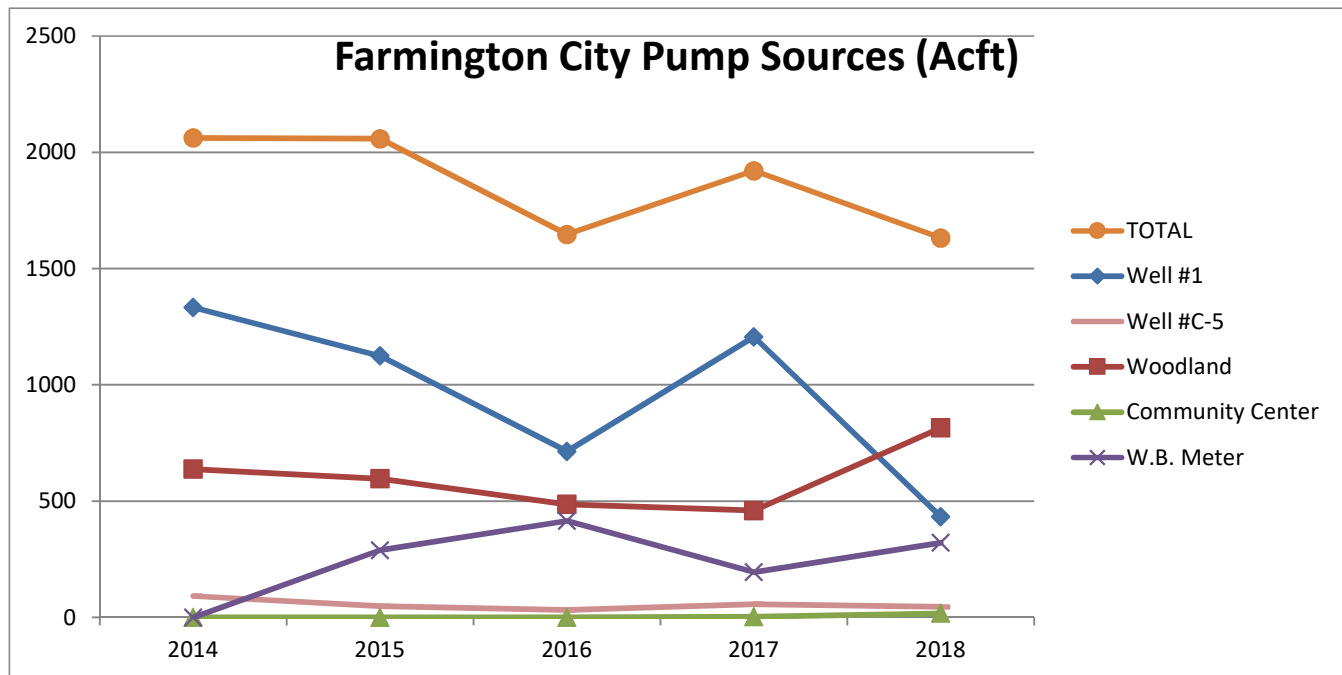
<b>Future Growth Rate 2019 - 2025</b>		<b>Population</b>	<b>Connections</b>	<b>ERCs</b>	
2.13%		2014	21,528	5,910	6,737
		2015	21,996	6,039	6,884
		2016	22,475	6,170	7,034
<b>Future Growth Rate 2025 - 2040</b>					
0.95%		2017	22,964	6,383	7,277
		2018	23,453	6,445	7,347
		2019	24,000	6,582	7,504
<b>Connection to ERU ratio</b>					
1.14		2020	24,511	6,723	7,664
		2021	25,033	6,884	7,847
		2022	25,566	7,045	8,031
		2023	26,111	7,206	8,214
		2024	26,667	7,366	8,398
		2025	27,235	7,527	8,581
		2026	27,494	7,688	8,765
		2027	27,755	7,849	8,948
		2028	28,019	8,010	9,131
		2029	28,285	8,171	9,315
		2030	28,554	8,332	9,498
		2031	28,825	8,490	9,678
		2032	29,099	8,655	9,867
		2033	29,375	8,820	10,055
		2034	29,654	8,985	10,243
		2035	29,936	9,150	10,431
		2036	30,220	9,316	10,620
		2037	30,508	9,481	10,808
		2038	30,797	9,646	10,996
		2039	31,090	9,811	11,185
		2040	31,385	9,976	11,373



Farmington City  
Water Impact Fee Facilities Plan  
Source Projections  
Revision Date: July 2019

TABLE C2

Sources (Acft)	2014	2015	2016	2017	2018
Well #1	1332.41	1124.95	713.9	1206.77	432.84
Well #C-5	91.74	48.5	32.09	56.944	45.481
Woodland	637.54	596.58	486.3	459.772	815.53
Community Center	-	-	-	2.69467	17.064
W.B. Meter	0	288.77	415.04	194.553	321.26
<b>TOTAL</b>	<b>2061.69</b>	<b>2058.8</b>	<b>1647.33</b>	<b>1920.73</b>	<b>1632.2</b>





Farmington City  
Water Impact Fee Facilities Plan  
Water Source Projections  
Revision Date: January 2021

TABLE C3

Source Req'd ( ERU ratio	800 gpd					Peak Day GPM	Peak Day GPM	Avg*PF=			Usable Available	
	1	Connections	ERUs	Acre-Ft Source Req	GPM Source Req'd	Peak gal/mon supplied	GPM Source Act		2 Contract	Acre-Ft Well Capty	Available Usable Pk Day	Total Pk Source GPM
2015		6,039	6884	6168.43	3824.43	62755000	1452.66	2905.32	500	5748	6248	4450.00
2016		6,170	7034	6302.68	3907.67	47857000	1107.80	2215.60	500	5748	6248	4450.00
2017		6,383	7277	6520.26	4042.57	64038000	1482.36	2964.72	500	5748	6248	4450.00
2018		6,445	7347	6583.59	4081.83	63156000	1461.94	2923.89	500	5748	6248	4450.00
2019		6,582	7504	6723.83	4168.78				500	5748	6248	4450.00
2020		6,723	7664	6867.38	4257.78				500	5748	6248	5450.00
2021		6,884	7847	7031.74	4359.68				500	5748	6248	5450.00
2022		7,045	8031	7196.10	4461.59				500	5748	6248	5450.00
2023		7,206	8214	7360.47	4563.49				500	5748	6248	5450.00
2024		7,366	8398	7524.83	4665.40				500	5748	6248	5450.00
2025		7,527	8581	7689.19	4767.31				500	5748	6248	5450.00
2026		7,688	8765	7853.56	4869.21				500	5748	6248	5450.00
2027		7,849	8948	8017.92	4971.12				500	5748	6248	5450.00
2028		8,010	9131	8182.28	5073.02				500	5748	6248	5450.00
2029		8,171	9315	8346.65	5174.93				500	5748	6248	5450.00
2030		8,332	9498	8511.02	5276.84				500	5748	6248	5450.00
2031		8,490	9678	8672.35	5376.86				500	5748	6248	5450.00
2032		8,655	9867	8841.05	5481.46				500	5748	6248	6320.00
2033		8,820	10055	9009.76	5586.05				500	5748	6248	6320.00
2034		8,985	10243	9178.46	5690.65				500	5748	6248	6320.00
2035		9,150	10431	9347.16	5795.25				500	5748	6248	6320.00
2036		9,316	10620	9515.86	5899.84				500	5748	6248	6320.00
2037		9,481	10808	9684.57	6004.44				500	5748	6248	6320.00
2038		9,646	10996	9853.27	6109.03				500	5748	6248	6320.00
2039		9,811	11185	10021.97	6213.63				500	5748	6248	6320.00
2040		9,976	11373	10190.68	6318.23				500	5748	6248	6320.00

Farmington City  
Water Impact Fee Facilities Plan  
Storage (Gallons)  
Revision Date: Feb 2021

TABLE C4

Indoor Storage: 400 gpd/ERU

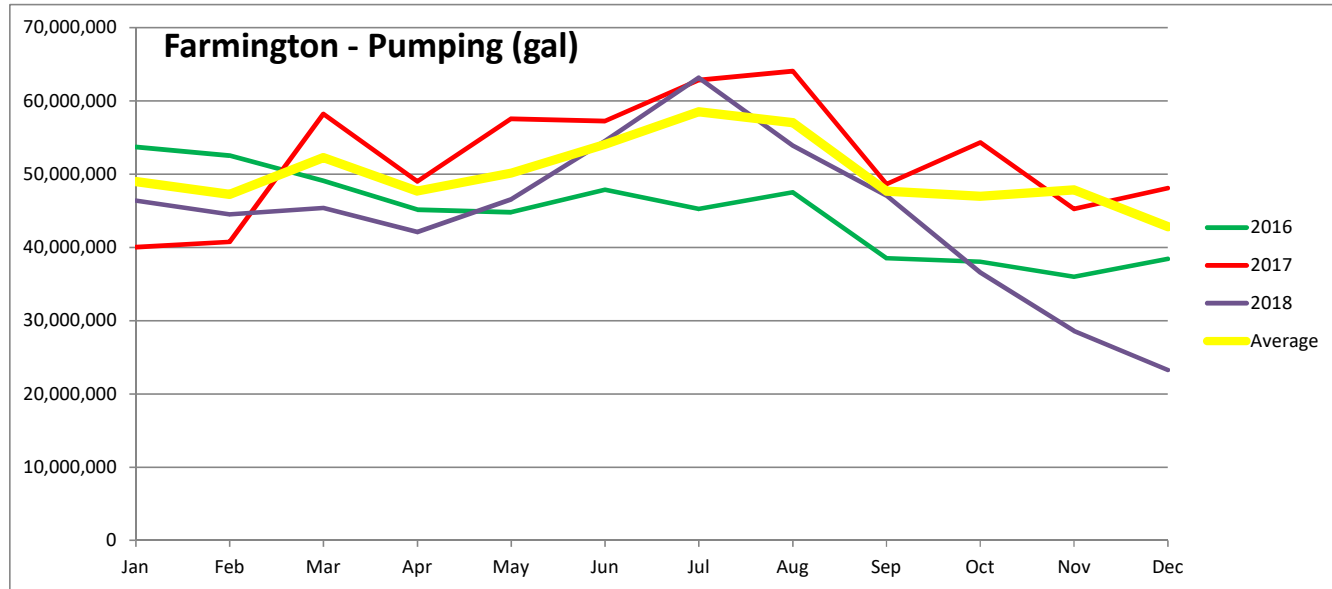
Fire Storage: 2kgpm/2 hrs

	Connector ERUs		(Indoor reqrd)			Total Req'd	Actual Storage
			Equilization	Fire Suppression	Emergency		
2014	5909.957	6737	2,694,941	240,000	4,171,768	7,106,708	6,950,000
2015	6038.579	6884	2,753,592	240,000	4,262,560	7,256,152	6,950,000
2016	6170	7034	2,813,520	240,000	4,355,329	7,408,849	6,950,000
2017	6383	7277	2,910,648	240,000	4,505,683	7,656,331	6,950,000
2018	6445	7347	2,938,920	240,000	4,549,448	7,728,368	8,950,000
2019	6582.279	7504	3,001,519	240,000	4,646,351	7,887,870	8,950,000
2020	6722.807	7664	3,065,600	240,000	4,745,549	8,051,149	8,950,000
2021	6883.711	7847	3,138,972	240,000	4,859,129	8,238,101	8,950,000
2022	7044.614	8031	3,212,344	240,000	4,972,709	8,425,053	8,950,000
2023	7205.518	8214	3,285,716	240,000	5,086,288	8,612,004	8,950,000
2024	7366.421	8398	3,359,088	240,000	5,199,868	8,798,956	8,950,000
2025	7527.325	8581	3,432,460	240,000	5,313,448	8,985,908	8,950,000
2026	7688.228	8765	3,505,832	240,000	5,427,028	9,172,860	10,450,000
2027	7849	8948	3,579,204	240,000	5,540,608	9,359,812	10,450,000
2028	8010	9131	3,652,576	240,000	5,654,188	9,546,764	10,450,000
2029	8171	9315	3,725,948	240,000	5,767,768	9,733,716	10,450,000
2030	8332	9498	3,799,323	240,000	5,881,353	9,920,676	10,450,000
2031	8490	9678	3,871,341	240,000	5,992,836	10,104,177	10,450,000
2032	8655	9867	3,946,650	240,000	6,109,414	10,296,065	10,450,000
2033	8820	10055	4,021,959	240,000	6,225,993	10,487,952	10,450,000
2034	8985	10243	4,097,268	240,000	6,342,571	10,679,840	11,950,000
2035	9150	10431	4,172,577	240,000	6,459,150	10,871,727	11,950,000
2036	9316	10620	4,247,887	240,000	6,575,728	11,063,615	11,950,000
2037	9481	10808	4,323,196	240,000	6,692,307	11,255,502	11,950,000
2038	9646	10996	4,398,505	240,000	6,808,885	11,447,390	11,950,000
2039	9811	11185	4,473,814	240,000	6,925,464	11,639,278	11,950,000
2040	9976	11373	4,549,123	240,000	7,042,042	11,831,165	11,950,000

# Farmington - Water Master Plan

Supplied Amounts (Including wells and Weber Basin)- Gallons

	Table C5													Peak Month
	Jan	Feb	Mar	Apr	May	Jun	Jul	Aug	Sep	Oct	Nov	Dec	TOTAL	(gpd)
2015	55,910,000	51,151,000	56,315,000	54,472,000	51,626,000	56,583,000	62,755,000	62,731,000	56,465,000	55,937,000	59,725,000	47,195,000	670,865,000	2,024,355
2016	53,696,000	52,523,000	49,084,000	45,149,000	44,810,000	47,857,000	45,229,000	47,516,000	38,514,000	38,020,000	35,975,000	38,404,000	536,777,000	1,732,129
2017	40,023,000	40,729,000	58,191,000	48,974,000	57,545,000	57,254,000	62,823,000	64,038,000	48,638,000	54,331,000	45,212,000	48,072,000	625,830,000	2,065,742
2018	46,365,000	44,489,000	45,361,000	42,076,000	46,518,000	54,501,000	63,156,000	53,871,000	47,076,000	36,569,000	28,569,000	23,260,000	531,811,000	2,037,290
Average	48,998,500	47,223,000	52,237,750	47,667,750	50,124,750	54,048,750	58,490,750	57,039,000	47,673,250	46,978,500	47,850,000	42,799,500		1,886,798





# Water Distribution Projections

Revision Date: January 2021

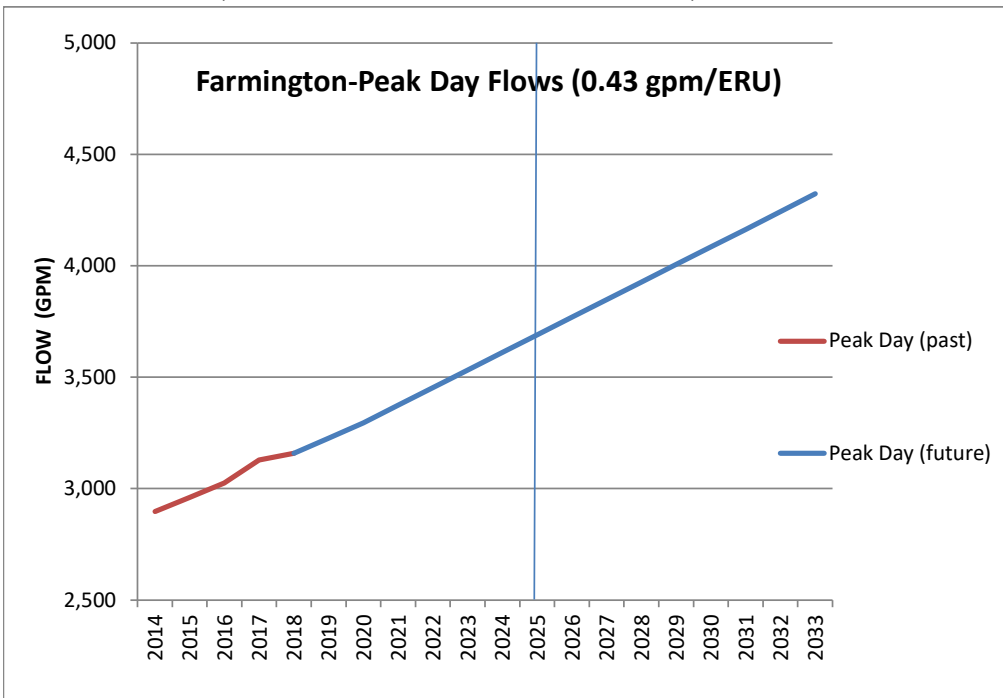
TABLE C6

Ave flow 0.215

Peak day 0.43 gpm/ERU

Peak Inst 0.645

	Connections	ERUs	Average Flow gpm	Peak Day Flow gpm	Peak Day Record(gpm)
2014	5,910	6737	1449	2,897	
2015	6,039	6884	1480	2,960	
2016	6,170	7034	1512	3,025	
2017	6,383	7277	1564	3,129	
2018	6,445	7347	1580	3,159	3,159
2019	6,582	7504			3,227
2020	6,723	7664			3,296
2021	6,884	7847			3,374
2022	7,045	8031			3,453
2023	7,206	8214			3,532
2024	7,366	8398			3,611
2025	7,527	8581			3,690
2026	7,688	8765			3,769
2027	7,849	8948			3,848
2028	8,010	9131			3,927
2029	8,171	9315			4,005
2030	8,332	9498			4,084
2031	8,490	9678			4,162
2032	8,655	9867			4,243
2033	8,820	10055			4,324
2034	8,985	10243			4,405
2035	9,150	10431			4,486
2036	9,316	10620			4,566
2037	9,481	10808			4,647
2038	9,646	10996			4,728
2039	9,811	11185			4,809
2040	9,976	11373			4,890



## MEMORANDUM

---

**DATE:** 3/12/2021

**TO:** Susie Decker, Zions Bank

**CC:** Greg Seegmiller, PE; Chad Boshell, PE

**FROM:** Nathan Smith, PE

**SUBJECT:** IFFP ERC's Growth Projection Update 2021

---

### Introduction

Farmington City is concerned that development will occur more rapidly than previously thought since the 2019 Master Plan Submission. The Farmington City planner provided J-U-B Engineers, Inc. (J-U-B) with updated growth rates for residential ERC's and square footage values for commercial, office, industrial, institutional, and Hotels. J-U-B was tasked with determining the square footage per ERC for each of the non-residential developments. Meter data and building areas for a variety of non-residential developments in Farmington, Layton, and Woods Cross were utilized to determine the SF/ERC. See Table 1 for building square footage per ERC that were calculated for this study.

Table 1. - Non-Residential Square Foot Per ERC

Development Type	SF/ERC
Commercial	10,000
Office	15,000
Industrial	10,000
Institutional	41,000
Hotel	1,500

### ERC Update

Based on the updated growth projections from the City Planner and the J-U-B non-residential SF/ERC analysis, the projected ERCs shifter higher than the 2019 Master Plan Submission. Because of the increase in growth projection ERCs from 2019 to 2040, requirements for storage and source increased as well. Previously in the 2019 Master plan it was projected that the build

out ERC's would be 9,813. In the 2021 ERC analysis update the build out ERC's are projected to be 11,373, an increase of additional 1,560 ERC's at build out.

## Master Plan Updates

Multiple tables and figures have been updated throughout the 2021 Master Plan update based on the updated 2021 ERC analysis, after 10 year (2031), and at buildout (2040). The updated tables and figures are:

- Table 2.3.1, 2.5.2, and 2.5.3
- Figure 2.1, 2.2, and 2.3

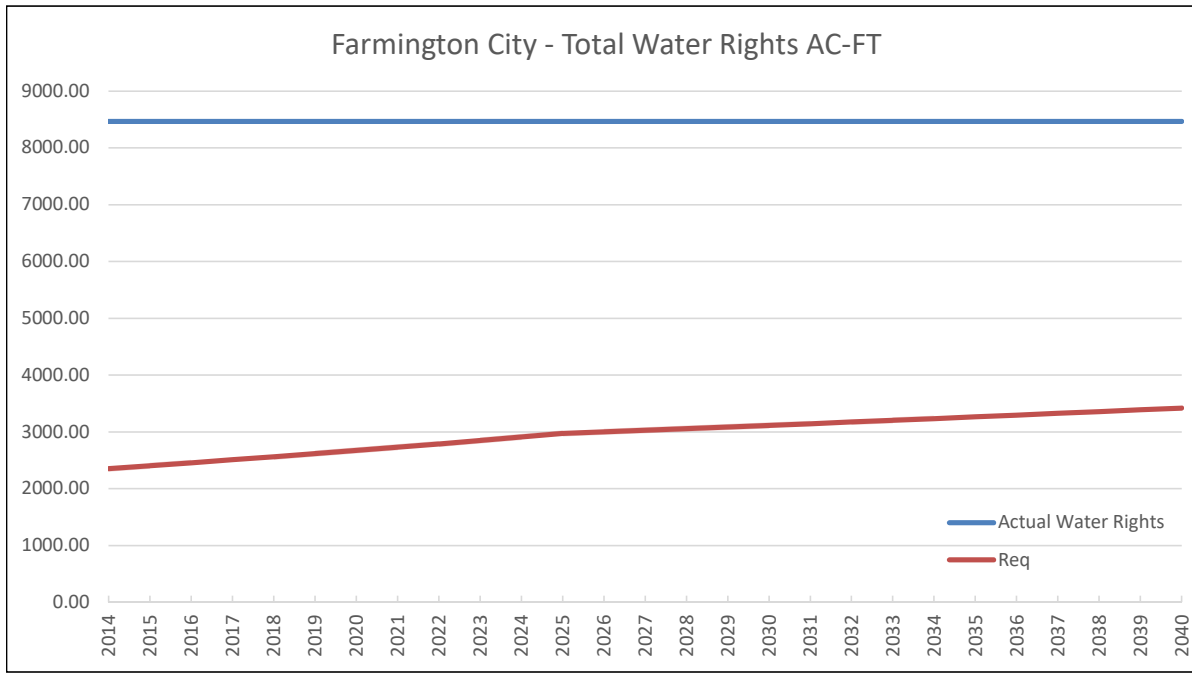
As a result of the increased number of ERC's from 2021 to buildout, additional source demand and storage will be required. Section 2.3.2 text was updated with the 2021 ERC's projection of 7,847 ERC in the storage calculations. Section 2.5.1 was updated with additional source demand (gpm) that will be required in 2032. The city will need an additional 870 gpm to meet future source demand needs. A 2 MG tank is planned to be installed in 2025 and based on the updated ERC's a 1.5 MG will need to be required in 2033. Cost estimates were added (CW-11 and CW-12) for an additional source and an additional tank to meet the needs of the increased ERC's.

## **APPENDIX D – WATER RIGHTS DATA**

**Table 2.5.1 - Farmington City Water Rights Summary**

WR#	Description	Flow (cfs)	Flow(gpm)	Volume (AF)	Priority Date	Proof Due
31-80	Well #1	0.8	359.0	579.17	5/9/1905	3/17/1999
31-2596		2	897.6	1447.93	5/9/1905	10/16/1989
31-5031		1.2	538.6	868.76	5/9/1905	6/30/2020
31-2597	Woodland Park	1.67	749.5	1209.02	5/9/1905	10/16/1989
31-5032		0.73	327.6	528.50	6/8/1905	9/30/2016
31-4859	Community Center	0.36	161.6	260.63	6/8/1905	7/31/2018
31-4283		1.46	655.2	1056.99	5/28/1905	4/30/2015
31-5032		0.92	412.9	666.05	6/8/1905	9/30/2016
31-5017	Well #C-5	0.54	242.4	390.94	5/28/1905	9/30/1991
31-5032	Well #3	1.99	893.1	1440.69	6/8/1905	9/30/2016
31-5239	Boyer <sup>1</sup>	6	2692.8	4343.80	5/17/1905	12/23/1988
31-3869	Wheeler	0.01	4.5	7.24	5/20/1905	10/31/2014
31-4981	Rudd Creek <sup>1</sup>	0.84	377.0	608.13	3/20/1905	N/A
31-5045	Freckleton	0.015	6.7	10.86	6/13/1905	1/13/1995
<b>TOTAL</b>		<b>18.54</b>	<b>8318.51</b>	<b>13418.73</b>		

Note 1: Surface Water Right



# Water Right Details for 31-80

Utah Division of Water Rights

9/25/2019 1:57 PM

(WARNING: Water Rights makes NO claims as to the accuracy of this data.)

Water Right: 31-80

Application/Claim: A27866

Certificate:

## Changes:

a4361	(Filed: 09/20/1963)	Amended by Subsequent Change
a4445	(Filed: 03/02/1964)	Amended by Subsequent Change
a9417	(Filed: 04/15/1977)	Certificated

## Owners:

Name: Farmington City Corporation (Public Water Supplier)  
Address: 130 North Main Street  
Farmington UT 84025

Interest:

Remarks:

## General:

Type of Right: Application To Appropriate	Source of Info.: Certificate	Status: Certificated
Quantity of Water: 0.8 CFS		
Source: Underground Water Well		
County: Davis		
Common Description: In Farmington City		
Proposed Det. Book: 31-	Map:	Pub. Date:
Land Owned by Appl.:	County Tax Id#:	
Distribution System:		

## Dates:

Filing:

Filed: 02/09/1956

Priority: 02/09/1956

Decree/Class:

Advertising:

Publication Began:

Publication End:

Newspaper:

Protest End Date:

Protested: Not Protested

Hearing Held:

Approval:

State Eng. Action: Approved

Action Date: 12/15/1961

Recon. Req. Date:

Recon. Req Action:

Certification:

Proof Due Date: 08/31/1990 Extension Filed Date:

Election or Proof: Proof

Election/Proof Date: 08/31/1990

Certificate Date: 03/17/1999

Lapsed, Etc. Date:

Lapsed Letter

Wells:

Prov. Well Date:

Well Renov. Date:

**Points of Diversion:****Points of Diversion - Underground:**

(1) N 871 ft. E 469 ft. from SW corner, Sec 18 T 3N R 1E SLBM

Well Diameter: 16 in. Depth: 223 to ft.

Year Drilled:

Well Log:

Well Id#:

Elevation:

UTM: 425111.902, 4537992.823 (NAD83)

Source/Cmnt:

**Water Uses:****Water Uses - Group Number: 32380**

Water Rights Appurtenant to the following use(s):

31-80(CERT), 31-2596(WUC), 31-2597(WUC), 31-2812(DIL), 31-2813(DIL),  
31-4283(APP), 31-4420(UNAP), 31-4859(CERT), 31-4981(UGWC), 31-5017(CERT),  
31-5031(APP), 31-5032(APP),

**Water Use Types:**

Municipal: Farmington

Period of Use: 01/01 to 12/31

Acre Feet Contributed by this Right for this Use: Unevaluated

Comments:

**Use Totals:**

Municipal sole-supply total: Unevaluated acft

**Segregation History:**

This Right was Segregated from: -, with Appl.#., Approval Date: / / under which Proof is to be submitted.

as originally  
filed:

Flow in CFS	AND/ OR/ BLANK	Quantity in Acre-Feet	Water Uses						
			Irrigated Acreage	Stock (ELUs)	Domestic (EDUs)	Acre-Feet			
						Municipal	Mining	Power	Other
2.0									

The following Water Rights have been Segregated from 31-80:

(1) WrNum:31-5031

[1.2]

AppNum:

Name: Farmington City Corporation

Filed: 10/31/1990

CommenSegregated from Change a9417

This Right  
as currently  
calculated:

Flow in CFS		Quantity in Acre-Feet	Water Uses						
			Irrigate Acreage	Stock (ELUs)	Domestic (EDUs)	Acre-Feet			
						Municipal	Mining	Power	Other
0.8									

# Water Right Details for 31-2596

Utah Division of Water Rights

9/25/2019 2:54 PM

(WARNING: Water Rights makes NO claims as to the accuracy of this data.)

Water Right: 31-2596

Application/Claim: A27861

Certificate:

## Changes:

a4261 (Filed: 02/15/1963) Water User's Claim

## Owners:

Name: Farmington City Corporation (Public Water Supplier)  
Address: Farmington UT 84025

Interest:

Remarks:

## General:

Type of Right: Application To Appropriate	Source of Info.: Water User's Claim	Status: Water User's Claim
Quantity of Water: 2 CFS		
Source: Underground Water Well		
County: Davis		
Common Description:		
Proposed Det. Book: 31-	Map: 19cc	Pub. Date:
Land Owned by Appl.:	County Tax Id#:	
Distribution System:		

## Dates:

Filing:		
Filed: 02/07/1956		
Priority: 02/07/1956	Decree/Class:	
Advertising:		
Publication Began: 07/20/1956	Publication End:	Newspaper: Davis County Clipper
Protest End Date:	Protested: Not Protested	Hearing Held:
Approval:		
State Eng. Action: Approved	Action Date: 12/13/1960	
Recon. Req. Date:	Recon. Req Action:	
Certification:		
Proof Due Date:	Extension Filed Date:	
Election or Proof: Election	Election/Proof Date: 08/24/1970	
Certificate Date: 10/16/1989	Lapsed, Etc. Date:	Lapsed Letter
Wells:		
Prov. Well Date:	Well Renov. Date:	



**Points of Diversion:****Points of Diversion - Underground:**

(1) N 780 ft. E 520 ft. from SW corner, Sec 18 T 3N R 1E SLBM

Well Diameter: 16 in.      Depth: 223 to ft.      Year Drilled: 1963      Well Log: Yes      Well Id#: 3086

Elevation:      UTM: 425127.447, 4537965.086 (NAD83)

Source/Cmnt:

**Water Uses:****Water Uses - Group Number: 32380****Water Rights Appurtenant to the following use(s):**

31-80(CERT), 31-2596(WUC), 31-2597(WUC), 31-2812(DIL), 31-2813(DIL),  
31-4283(APP), 31-4420(UNAP), 31-4859(CERT), 31-4981(UGWC), 31-5017(CERT),  
31-5031(APP), 31-5032(APP),

**Water Use Types:**

Municipal: Farmington

Period of Use: 01/01 to 12/31

Acre Feet Contributed by this Right for this Use: Unevaluated

Comments:

**Use Totals:**

Municipal sole-supply total: Unevaluated acft

# Water Right Details for 31-2597

Utah Division of Water Rights

9/25/2019 2:56 PM

(WARNING: Water Rights makes NO claims as to the accuracy of this data.)

Water Right: 31-2597

Application/Claim: A27862

Certificate:

## Changes:

a5057 (Filed: 10/24/1966) Water User's Claim

## Owners:

Name: Farmington City Corporation (Public Water Supplier)  
Address: Farmington UT 84025

Interest:

Remarks:

## General:

Type of Right: Application To Appropriate	Source of Info.: Water User's Claim	Status: Water User's Claim
Quantity of Water: 1.67 CFS		
Source: Underground Water Well		
County: Davis		
Common Description:		
Proposed Det. Book: 31-	Map: 23bc	Pub. Date:
Land Owned by Appl.:	County Tax Id#:	
Distribution System:		

## Dates:

Filing:		
Filed: 02/07/1956		
Priority: 02/07/1956	Decree/Class:	
Advertising:		
Publication Began: 07/20/1956	Publication End:	Newspaper: Davis County Clipper
Protest End Date:	Protested: Not Protested	Hearing Held:
Approval:		
State Eng. Action: Approved	Action Date: 12/13/1960	
Recon. Req. Date:	Recon. Req Action:	
Certification:		
Proof Due Date:	Extension Filed Date:	
Election or Proof: Election	Election/Proof Date: 08/19/1970	
Certificate Date: 10/16/1989	Lapsed, Etc. Date:	Lapsed Letter
Wells:		
Prov. Well Date:	Well Renov. Date:	

**Points of Diversion:****Points of Diversion - Underground:**

(1) N 1150 ft. W 470 ft. from S4 corner, Sec 19 T 3N R 1E SLBM

Well Diameter: 12 in.      Depth: 300 to ft.      Year Drilled: 1967      Well Log: Yes      Well Id#: 3087

Elevation:      UTM: 425602.185, 4536470.85 (NAD83)

Source/Cmnt:

**Water Uses:****Water Uses - Group Number: 32380****Water Rights Appurtenant to the following use(s):**

31-80(CERT), 31-2596(WUC), 31-2597(WUC), 31-2812(DIL), 31-2813(DIL),  
31-4283(APP), 31-4420(UNAP), 31-4859(CERT), 31-4981(UGWC), 31-5017(CERT),  
31-5031(APP), 31-5032(APP),

**Water Use Types:**

Municipal: Farmington

Period of Use: 01/01 to 12/31

Acre Feet Contributed by this Right for this Use: Unevaluated

Comments:

**Use Totals:**

Municipal sole-supply total: Unevaluated acft

# Water Right Details for 31-3869

Utah Division of Water Rights

9/25/2019 3:04 PM

(WARNING: Water Rights makes NO claims as to the accuracy of this data.)

Water Right: 31-3869

Application/Claim: A38240

Certificate:

## Owners:

Name: Farmington City  
Address: 160 South Main Street  
Farmington, UT 84025

Interest: 100%

Remarks:

## General:

Type of Right: Application To Appropriate Source of Info.: Application to Appropriate Status: Approved

Quantity of Water: 0.1 CFS

Source: Underground Water Well

County: Davis

Common Description: 2.5 mi W of Farmington

Proposed Det. Book: 31-

Map: 22b

Pub. Date:

Land Owned by Appl.: Yes

County Tax Id#:

Distribution System:

## Dates:

Filing:

Filed: 05/19/1967

Priority: 05/19/1967

Decree/Class:

Advertising:

Publication Began:

Publication End:

Newspaper:

Protest End Date:

Protested: Not Protested

Hearing Held:

Approval:

State Eng. Action: Approved

Action Date: 10/04/1967

Recon. Req. Date:

Recon. Req Action:

Certification:

Proof Due Date: 10/31/2027 Extension Filed Date:

Election or Proof:

Election/Proof Date:

Certificate Date:

Lapsed, Etc. Date:

Lapsed Letter

Wells:

Prov. Well Date:

Well Renov. Date:

## Points of Diversion:

Points of Diversion - Underground:

(1) S 600 ft. W 950 ft. from NE corner, Sec 22 T 3N R 1W SLBM

Well Diameter: 4 in.

Depth: 340 to ft.

Year Drilled:

Well Log:

Well Id#:

Elevation:

UTM: 421436.379, 4537579.46 (NAD83)

Source/Cmnt:

**Water Uses:****Water Uses - Group Number: 31954**

Water Rights Appurtenant to the following use(s):

31-3869(APP),

**Water Use Types:**

Irrigation-Beneficial Use Amount: 5.05 acres      Group Total: 5.05      Period of Use: 04/01 to 10/31  
 Comments:

Stock Water-Beneficial Use Amount: 6 ELUs      Group Total: 6      Period of Use: 01/01 to 12/31  
 Comments:

Place Of Use:	North West				North East				South West				South East				Section Totals
	NW	NE	SW	SE	NW	NE	SW	SE	NW	NE	SW	SE	NW	NE	SW	SE	
Sec 22 T 3N R 1W SLBM						5.05											5.05
Group Acreage Total :																	5.05

**Place of Use Stock:**

	North West				North East				South West				South East			
	NW	NE	SW	SE	NW	NE	SW	SE	NW	NE	SW	SE	NW	NE	SW	SE
Sec 22 T 3N R 1W SLBM						X										

**Use Totals:**

Irrigation sole-supply total: 5.05 acres      for a group total of: 5.05 acres  
 Stock Water sole-supply total: 6 ELUs      for a group total of: 6 ELUs

**Extensions**

Filed: 06/22/2007	Proof Due: 10/31/2012	
Advertising:		
Publication Began: 09/11/2007	Publication End: 09/18/2007	Newspaper: Davis County Clipper
Protested:	Hearing Held:	Protest End Date: 10/08/2007
Approval:		
SE Action: Approved	Action Date: 12/11/2007	Memo Decision: No
Filed: 10/29/2012	Proof Due: 10/31/2014	
Advertising:		
Publication Began: 11/22/2012	Publication End: 11/29/2012	Newspaper: Davis County Clipper
Protested:	Hearing Held:	Protest End Date: 12/19/2012
Approval:		
SE Action: Approved	Action Date: 12/27/2012	Memo Decision: No
Filed: 10/27/2014	Proof Due: 10/31/2017	
Advertising:		
Publication Began: 11/20/2014	Publication End: 11/27/2014	Newspaper: Davis County Clipper
Protested: Not Protested	Hearing Held:	Protest End Date: 12/17/2014
Approval:		
SE Action: Approved	Action Date: 02/10/2015	Memo Decision: No

## Extensions

Filed: 10/27/2017

Proof Due: 10/31/2027

Advertising:

Publication Began: 11/16/2017

Publication End: 11/23/2017

Newspaper: Davis County Clipper

Protested: Not Protested

Hearing Held:

Protest End Date: 12/13/2017

Approval:

SE Action: Approved

Action Date: 02/26/2019

Memo Decision: Yes

## Special Orders

	Date			Requested	Date	Regional
#	Requested	Special Order Type	Special Order	By	Designated	Designation
1	03/15/2007	Proof Due Notice	Other Error Correction	Hansen, Ross	03/15/2007	Hansen, Ross

# Water Right Details for 31-4283

Utah Division of Water Rights

9/25/2019 3:00 PM

(WARNING: Water Rights makes NO claims as to the accuracy of this data.)

Water Right: 31-4283

Application/Claim: A45791

Certificate:

## Changes:

a39084	(Filed: 06/10/2013)	Withdrawn
a39659	(Filed: 03/12/2014)	Approved

## Owners:

Name: Farmington City Corporation  
Address: 160 South Main Street  
Farmington, Utah 84025

Interest:

Remarks:

## General:

Type of Right: Application To Appropriate	Source of Info.: Application to Appropriate	Status: Approved
Quantity of Water: 1.46 cfs OR 394.2 ACFT		
Source: Underground Water Well		
County: Davis		
Common Description: Farmington		
Proposed Det. Book: 31-	Map:	Pub. Date:
Land Owned by Appl.:	County Tax Id#:	
Distribution System:		

## Dates:

Filing:

Filed: 12/22/1975

Priority: 12/22/1975

Decree/Class:

Advertising:

Publication Began: 01/22/1976

Publication End:

Newspaper: Weekly Reflex

Protest End Date:

Protested: Not Protested

Hearing Held:

Approval:

State Eng. Action: Approved

Action Date: 04/16/1976

Recon. Req. Date:

Recon. Req Action:

Certification:

Proof Due Date: 04/30/2020 Extension Filed Date:

Election or Proof:

Election/Proof Date:

Certificate Date:

Lapsed, Etc. Date:

Lapsed Letter

Wells:

Prov. Well Date:

Well Renov. Date:

**Points of Diversion:****Points of Diversion - Underground:**

(1) S 413 ft. E 1156 ft. from W4 corner, Sec 19 T 3N R 1E SLBM

Well Diameter: 18 in. Depth: 725 to ft.

Year Drilled: 2011

Well Log: Yes Well Id#:

Elevation:

UTM: 425311.801, 4536796.954 (NAD83)

Source/Cmnt: Community Center Well

(2) S 958 ft. W 115 ft. from NE corner, Sec 30 T 3N R 1E SLBM

Well Diameter: 6 in. Depth: 440 to ft.

Year Drilled: 1976

Well Log: Yes Well Id#:

Elevation:

UTM: 426505.877, 4535830.333 (NAD83)

Source/Cmnt:

(3) S 1318 ft. W 290 ft. from NE corner, Sec 30 T 3N R 1E SLBM

Well Diameter: 11 in. Depth: 305 to ft.

Year Drilled: 1979

Well Log: Yes Well Id#:

Elevation:

UTM: 426452.537, 4535720.605 (NAD83)

Source/Cmnt:

**Points of Diversion - Abandoned:**

(1) S 93 ft. W 750 ft. from NE corner, Sec 30 T 3N R 1E SLBM

Well Diameter: 12 in. Depth: 500 to ft.

Year Drilled:

Well Log:

Well Id#:

Elevation:

UTM: 426312.329, 4536093.985 (NAD83)

Source/Cmnt:

**Water Uses:****Water Uses - Group Number: 32380****Water Rights Appurtenant to the following use(s):**

31-80(CERT), 31-2596(WUC), 31-2597(WUC), 31-2812(DIL), 31-2813(DIL),  
31-4283(APP), 31-4420(UNAP), 31-4859(CERT), 31-4981(UGWC), 31-5017(CERT),  
31-5031(APP), 31-5032(APP),

**Water Use Types:**

Municipal: Farmington

Period of Use: 01/01 to 12/31

Acre Feet Contributed by this Right for this Use: 394.2

Comments:

**Use Totals:**

Municipal sole-supply total: 394.2 acft

**Other Comments:**

This application is limited to an annual diversion of 394.2 acre-feet and depletion of 78.84 acre-feet.



## Segregation History:

This Right was Segregated from: -, with Appl.#., Approval Date: / / under which Proof is to be submitted.

as originally  
filed:

Flow in CFS	AND/ OR/ BLANK	Quantity in Acre-Feet	Water Uses						
			Irrigated Acreage	Stock (ELUs)	Domestic (EDUs)	Acre-Feet			
						Municipal	Mining	Power	Other
2.0					1200.0				

The following Water Rights have been Segregated from 31-4283:

(1) WrNum: 31-5017 [0.54] [324.0]

AppNum: A45791a

Name: Farmington City Corporation

Filed: 04/13/1990

Commen

This Right  
as currently  
calculated:

Flow in CFS		Quantity in Acre-Feet	Water Uses						
			Irrigate Acreage	Stock (ELUs)	Domestic (EDUs)	Acre-Feet			
						Municipal	Mining	Power	Other
1.46					876.0				

## Extensions

Filed: 07/19/2000

Proof Due: 04/30/2005

Advertising:

Publication Began: 08/08/2000

Publication End:

Newspaper: Davis County Clipper

Protested: Not Protested

Hearing Held:

Protest End Date: 09/04/2000

Approval:

SE Action: Approved

Action Date: 09/15/2000

Memo Decision: No

Filed: 03/31/2005

Proof Due: 04/30/2010

Advertising:

Publication Began: 04/19/2005

Publication End: 04/26/2005

Newspaper: Davis County Clipper

Protested: Not Protested

Hearing Held:

Protest End Date: 05/16/2005

Approval:

SE Action: Approved

Action Date: 06/22/2005

Memo Decision: No

Filed: 03/16/2010

Proof Due: 04/30/2015

Advertising:

Publication Began: 03/30/2010

Publication End: 04/06/2010

Newspaper: Davis County Clipper

Protested:

Hearing Held:

Protest End Date: 04/26/2010

Approval:

SE Action: Approved

Action Date: 04/29/2010

Memo Decision: No

Filed: 04/29/2015

Proof Due: 04/30/2020

Advertising:

Publication Began: 05/07/2015

Publication End: 05/14/2015

Newspaper: Davis County Clipper

Protested: Not Protested

Hearing Held:

Protest End Date: 06/03/2015

Approval:

SE Action: Approved

Action Date: 01/27/2016

Memo Decision: No

# Water Right Details for 31-4859

Utah Division of Water Rights

9/25/2019 2:59 PM

(WARNING: Water Rights makes NO claims as to the accuracy of this data.)

Water Right: 31-4859

Application/Claim: A61561

Certificate:

## Changes:

a38378 (Filed: 07/30/2012) Approved

## Owners:

Name: Farmington City Corporation (Public Water Supplier)  
Address: 130 North Main  
Farmington UT 84025

Interest:

Remarks:

## General:

Type of Right: Application To Appropriate	Source of Info.: Certificate	Status: Certificated
Quantity of Water: 0.36 CFS		
Source: Underground Water Well		
County: Davis		
Common Description: South Farmington		
Proposed Det. Book: 31-	Map:	Pub. Date:
Land Owned by Appl.: No	County Tax Id#:	
Distribution System:		

## Dates:

Filing:		
Filed: 02/24/1986		
Priority: 02/24/1986	Decree/Class:	
Advertising:		
Publication Began: 03/20/1986	Publication End:	Newspaper: Davis County Clipper
Protest End Date: 05/02/1986	Protested: Protested and	Hearing Held:
Approval:		
State Eng. Action: Approved	Action Date: 09/11/1986	
Recon. Req. Date:	Recon. Req Action:	
Certification:		
Proof Due Date: 08/31/1990	Extension Filed Date:	
Election or Proof: Proof	Election/Proof Date: 08/31/1990	
Certificate Date: 08/12/1994	Lapsed, Etc. Date:	Lapsed Letter
Wells:		
Prov. Well Date:	Well Renov. Date:	

**Points of Diversion:****Points of Diversion - Underground:**

(1) S 123 ft. E 2306 ft. from W4 corner, Sec 30 T 3N R 1E SLBM

Well Diameter: 14 in. Depth: 320 to ft. Year Drilled: Well Log: Well Id#: 3088

Elevation: UTM: 425645.324, 4535278.833 (NAD83)

Source/Cmnt:

**Water Uses:****Water Uses - Group Number: 32380**

Water Rights Appurtenant to the following use(s):

31-80(CERT), 31-2596(WUC), 31-2597(WUC), 31-2812(DIL), 31-2813(DIL),  
31-4283(APP), 31-4420(UNAP), 31-4859(CERT), 31-4981(UGWC), 31-5017(CERT),  
31-5031(APP), 31-5032(APP),**Water Use Types:**

Municipal: Farmington

Period of Use: 01/01 to 12/31

Acre Feet Contributed by this Right for this Use: Unevaluated

Comments:

**Use Totals:**

Municipal sole-supply total: Unevaluated acft

**Segregation History:**

This Right was Segregated from: -, with Appl.#., Approval Date: / / under which Proof is to be submitted.

as originally filed:	Flow in CFS	AND/ OR/ BLANK	Quantity in Acre-Feet	Water Uses						
				Irrigated Acreage	Stock (ELUs)	Domestic (EDUs)	Acre-Feet			
							Municipal	Mining	Power	Other
	4.0									

The following Water Rights have been Segregated from 31-4859:

(1) WrNum:31-5032 [3.64]

AppNum:A61561a

Name:Farmington City Corporation

Filed:08/31/1990

Commen

This Right as currently calculated:	Flow in CFS		Quantity in Acre-Feet	Water Uses						
				Irrigate Acreage	Stock (ELUs)	Domestic (EDUs)	Acre-Feet			
							Municipal	Mining	Power	Other
	0.36									

# Water Right Details for 31-4981

Utah Division of Water Rights

9/25/2019 3:05 PM

(WARNING: Water Rights makes NO claims as to the accuracy of this data.)

Water Right: 31-4981

Application/Claim: U23977

Certificate:

## Owners:

Name: Farmington City Corporation (Public Water Supplier)  
Address: 286 South 200 East  
Farmington UT 84025

Interest:

Remarks:

## General:

Type of Right: Underground Water Claim Source of Info.: Underground Water Status:  
Quantity of Water: 0.84 CFS

Source: Rudd Creek

County: Davis

Common Description: Limits of Farmington City

Proposed Det. Book: 31-

Map:

Pub. Date:

Land Owned by Appl.:

County Tax Id#:

Distribution System:

## Dates:

Filing:

Filed: 01/04/1990

Priority: / /1906

Decree/Class:

Advertising:

Publication Began:

Publication End:

Newspaper:

Protest End Date:

Protested: Not Protested

Hearing Held:

Approval:

State Eng. Action:

Action Date:

Recon. Req. Date:

Recon. Req Action:

Certification:

Proof Due Date:

Extension Filed Date:

Election or Proof:

Election/Proof Date:

Certificate Date:

Lapsed, Etc. Date:

Lapsed Letter

Wells:

Prov. Well Date:

Well Renov. Date:

## Points of Diversion:

Points of Diversion - Surface:

Stream Alteration Required:

(1) N 800 ft. E 1900 ft. from SW corner, Sec 17 T 3N R 1E SLBM

Diverting Works: Developed Springs Areas

Source: Rudd Creek

Elevation:

UTM: 427130.046, 4537972.184

(2) N 700 ft. W 2220 ft. from SE corner, Sec 17 T 3N R 1E SLBM

Diverting Works: Developed Springs Areas

Source: Rudd Creek

Elevation:

UTM: 427497.306, 4537922.705

**Points of Diversion - Surface:****Stream Alteration Required:**

(3) N 650 ft. W 1500 ft. from SE corner, Sec 17 T 3N R 1E SLBM

Diverting Works: Developed Springs Areas

Elevation:

Source: Rudd Creek

UTM: 427716.762, 4537907.465

(4) N 800 ft. W 1320 ft. from SE corner, Sec 17 T 3N R 1E SLBM

Diverting Works: Developed Springs Areas

Elevation:

Source: Rudd Creek

UTM: 427771.626, 4537953.185

(5) N 1600 ft. W 2350 ft. from SE corner, Sec 17 T 3N R 1E SLBM

Diverting Works: Developed Springs Areas

Elevation:

Source: Rudd Creek

UTM: 427457.682, 4538197.025

**Water Uses:****Water Uses - Group Number: 32380**

Water Rights Appurtenant to the following use(s):

31-80(CERT), 31-2596(WUC), 31-2597(WUC), 31-2812(DIL), 31-2813(DIL),  
31-4283(APP), 31-4420(UNAP), 31-4859(CERT), 31-4981(UGWC), 31-5017(CERT),  
31-5031(APP), 31-5032(APP),

**Water Use Types:**

Municipal: Farmington

Period of Use: 01/01 to 12/31

Acre Feet Contributed by this Right for this Use: Unevaluated

Comments:

**Use Totals:**

Municipal sole-supply total: Unevaluated acft

**Reservoirs:**

Reservoir/Storage Name: C1A, C1B

Dam Number:

Capacity: 0.69 acre-feet

Area Inundated: 0 acres

Dam Height: 0 feet

From: 01/01 to 12/31 inclusive

Area	North West Quarter				North East Quarter				South West Quarter				South East Quarter			
	NW	NE	SW	SE	NW	NE	SW	SE	NW	NE	SW	SE	NW	NE	SW	SE

# Water Right Details for 31-5017

Utah Division of Water Rights

9/25/2019 3:02 PM

(WARNING: Water Rights makes NO claims as to the accuracy of this data.)

Water Right: 31-5017

Application/Claim: A45791a

Certificate: 13309

## Changes:

a15917 (Filed: 11/21/1990) Certificated

## Owners:

Name: Farmington City Corporation (Public Water Supplier)  
Address: 130 North Main Street., P.O. Box F  
Farmington UT 84025

Interest: 100%

Remarks:

## General:

Type of Right: Application To Appropriate Source of Info.: Certificate Status: Certificated  
Quantity of Water: 0.54 CFS

Source: Underground Water Well

County: Davis

Common Description: 2 Miles South of Farmington

Proposed Det. Book: 31-

Map:

Pub. Date:

Land Owned by Appl.:

County Tax Id#:

Distribution System:

## Dates:

Filing:

Filed: 04/13/1990

Priority: 12/22/1975

Decree/Class:

Advertising:

Publication Began:

Publication End:

Newspaper:

Protest End Date:

Protested: Not Protested

Hearing Held:

Approval:

State Eng. Action: Approved

Action Date: 07/05/1991

Recon. Req. Date:

Recon. Req Action:

Certification:

Proof Due Date:

Extension Filed Date:

Election or Proof: Proof

Election/Proof Date: 04/13/1990

Certificate Date: 09/30/1991

Lapsed, Etc. Date:

Lapsed Letter

Wells:

Prov. Well Date:

Well Renov. Date:

**Points of Diversion:****Points of Diversion - Underground:**

(1) S 1318 ft. W 297 ft. from NE corner, Sec 30 T 3N R 1E SLBM

Well Diameter: 11 in. Depth: 305 to ft.

Year Drilled: 1979

Well Log: Yes Well Id#: 3085

Elevation:

UTM: 426450.403, 4535720.605 (NAD83)

Source/Cmnt:

**Water Uses:****Water Uses - Group Number: 32380****Water Rights Appurtenant to the following use(s):**

31-80(CERT), 31-2596(WUC), 31-2597(WUC), 31-2812(DIL), 31-2813(DIL),  
31-4283(APP), 31-4420(UNAP), 31-4859(CERT), 31-4981(UGWC), 31-5017(CERT),  
31-5031(APP), 31-5032(APP),

**Water Use Types:**

Municipal: Farmington

Period of Use: 01/01 to 12/31

Acre Feet Contributed by this Right for this Use: Unevaluated

Comments:

**Use Totals:**

Municipal sole-supply total: Unevaluated acft

# Water Right Details for 31-5031

Utah Division of Water Rights

9/25/2019 2:55 PM

(WARNING: Water Rights makes NO claims as to the accuracy of this data.)

Water Right: 31-5031

Application/Claim: A27866a

Certificate:

## Changes:

a25267 (Filed: 02/09/2001) Approved

## Owners:

Name: Farmington City Corporation (Public Water Supplier)  
Address: 130 North Main Street  
Farmington UT 84025

Interest:

Remarks:

## General:

Type of Right: Application To Appropriate Source of Info.: Application to Segregate Status: Approved  
Quantity of Water: 1.2 CFS

Source: Underground Water Well  
County: Davis

Common Description: In Farmington City

Proposed Det. Book: 31-

Map:

Pub. Date:

Land Owned by Appl.:

County Tax Id#:

Distribution System:

## Dates:

Filing:

Filed: 02/09/1956

Priority: 02/09/1956

Decree/Class:

Advertising:

Publication Began:

Publication End:

Newspaper:

Protest End Date:

Protested: Not Protested

Hearing Held:

Approval:

State Eng. Action: Approved

Action Date: 12/15/1961

Recon. Req. Date:

Recon. Req Action:

Certification:

Proof Due Date: 06/30/2020 Extension Filed Date:

Election or Proof:

Election/Proof Date:

Certificate Date:

Lapsed, Etc. Date:

Lapsed Letter

Wells:

Prov. Well Date:

Well Renov. Date:



## Points of Diversion:

### Points of Diversion - Underground:

(1) N 950 ft. E 500 ft. from SW corner, Sec 18 T 3N R 1E SLBM

Well Diameter: 18 in.      Depth: 223 to ft.      Year Drilled:      Well Log:      Well Id#:  
Elevation:      UTM: 425121.351, 4538016.902 (NAD83)  
Source/Cmnt:

(2) N 1110 ft. W 460 ft. from S4 corner, Sec 19 T 3N R 1E SLBM

Well Diameter: 16 in.      Depth: 300 to ft.      Year Drilled:      Well Log:      Well Id#:  
Elevation:      UTM: 425605.233, 4536458.658 (NAD83)  
Source/Cmnt: (F.C. Well #2)

(3) S 700 ft. E 100 ft. from NW corner, Sec 19 T 3N R 1E SLBM

Well Diameter: in.      Depth: to ft.      Year Drilled:      Well Log:      Well Id#:  
Elevation:      UTM: 424999.431, 4537513.982 (NAD83)  
Source/Cmnt:

(4) N 760 ft. W 170 ft. from S4 corner, Sec 19 T 3N R 1E SLBM

Well Diameter: 6 in.      Depth: 100 to 300 ft.      Year Drilled:      Well Log:      Well Id#:  
Elevation:      UTM: 425693.625, 4536351.978 (NAD83)  
Source/Cmnt:

(5) N 750 ft. W 170 ft. from S4 corner, Sec 19 T 3N R 1E SLBM

Well Diameter: 20 in.      Depth: 100 to 500 ft.      Year Drilled:      Well Log:      Well Id#:  
Elevation:      UTM: 425693.625, 4536348.93 (NAD83)  
Source/Cmnt: (F.C. Well #2R)

(6) N 1200 ft. W 1500 ft. from S4 corner, Sec 19 T 3N R 1E SLBM

Well Diameter: in.      Depth: to ft.      Year Drilled:      Well Log:      Well Id#:  
Elevation:      UTM: 425288.241, 4536486.09 (NAD83)  
Source/Cmnt:

(7) N 2400 ft. E 1600 ft. from SW corner, Sec 30 T 3N R 1E SLBM

Well Diameter: in.      Depth: to ft.      Year Drilled:      Well Log:      Well Id#:  
Elevation:      UTM: 425422.636, 4535245.837 (NAD83)  
Source/Cmnt:

(8) N 1200 ft. E 1500 ft. from SW corner, Sec 30 T 3N R 1E SLBM

Well Diameter: in.      Depth: to ft.      Year Drilled:      Well Log:      Well Id#:  
Elevation:      UTM: 425392.156, 4534880.077 (NAD83)  
Source/Cmnt:

(9) N 850 ft. E 1500 ft. from SW corner, Sec 12 T 3N R 1W SLBM

Well Diameter: in.      Depth: to ft.      Year Drilled:      Well Log:      Well Id#:  
Elevation:      UTM: 423818.144, 4539623.435 (NAD83)  
Source/Cmnt:

(10) N 2700 ft. W 2650 ft. from SE corner, Sec 24 T 3N R 1W SLBM

Well Diameter: in.      Depth: to ft.      Year Drilled:      Well Log:      Well Id#:  
Elevation:      UTM: 424142.233, 4536941.29 (NAD83)  
Source/Cmnt:

**Water Uses:****Water Uses - Group Number: 32380**

Water Rights Appurtenant to the following use(s):

31-80(CERT), 31-2596(WUC), 31-2597(WUC), 31-2812(DIL), 31-2813(DIL),  
 31-4283(APP), 31-4420(UNAP), 31-4859(CERT), 31-4981(UGWC), 31-5017(CERT),  
 31-5031(APP), 31-5032(APP),

**Water Use Types:**

Municipal: Farmington

Period of Use: 01/01 to 12/31

Acre Feet Contributed by this Right for this Use: Unevaluated

Comments:

**Use Totals:**

Municipal sole-supply total: Unevaluated acft

**Segregation History:**

This Right was Segregated from: 31-80, with Appl.#:A27866, Approval Date:12/15/1961 under which Proof is to be submitted.

as originally filed:	Flow in CFS	AND/ OR/ BLANK	Quantity in Acre-Feet	Water Uses						
				Irrigated Acreage	Stock (ELUs)	Domestic (EDUs)	Acre-Feet			
							Municipal	Mining	Power	Other
	1.2									

Comment: Segregated from Change a9417

This Right as currently calculated:	Flow in CFS		Quantity in Acre-Feet	Water Uses						
				Irrigate Acreage	Stock (ELUs)	Domestic (EDUs)	Acre-Feet			
							Municipal	Mining	Power	Other
	1.2									

**Extensions**

Filed: 01/26/2000

Proof Due: 03/31/2005

Advertising:

Publication Began: 02/15/2000

Publication End:

Newspaper: Davis County Clipper

Protested: Not Protested

Hearing Held:

Protest End Date: 03/13/2000

Approval:

SE Action: Approved

Action Date: 05/25/2000

Memo Decision: No

Filed: 03/31/2005

Proof Due: 12/31/2010

Advertising:

Publication Began: 04/19/2005

Publication End: 04/26/2005

Newspaper: Davis County Clipper

Protested: Not Protested

Hearing Held:

Protest End Date: 05/16/2005

Approval:

SE Action: Approved

Action Date: 06/22/2005

Memo Decision: No

Filed: 03/15/2013

Proof Due: 06/30/2020

Advertising:

Publication Began: 03/28/2013

Publication End: 04/04/2013

Newspaper: Davis County Clipper

Protested: Not Protested

Hearing Held:

Protest End Date: 04/24/2013

Approval:

SE Action: Approved

Action Date: 05/20/2013

Memo Decision: No

# Water Right Details for 31-5032

Utah Division of Water Rights

9/25/2019 2:57 PM

(WARNING: Water Rights makes NO claims as to the accuracy of this data.)

Water Right: 31-5032

Application/Claim: A61561a

Certificate:

## Changes:

a41977 (Filed: 09/01/2016) Approved

## Owners:

Name: Farmington City Corporation (Public Water Supplier)  
Address: 130 North Main Street  
Farmington UT 84025

Interest:

Remarks:

## General:

Type of Right: Application To Appropriate Source of Info.: Application to Segregate Status: Approved  
Quantity of Water: 3.64 CFS

Source: Underground Water Well  
County: Davis

Common Description: Farmington

Proposed Det. Book: 31-

Map:

Pub. Date:

Land Owned by Appl.:

County Tax Id#:

Distribution System:

## Dates:

Filing:

Filed: 02/24/1986

Priority: 02/24/1986

Decree/Class:

Advertising:

Publication Began:

Publication End:

Newspaper:

Protest End Date:

Protested: Not Protested

Hearing Held:

Approval:

State Eng. Action: Approved

Action Date: 09/11/1986

Recon. Req. Date:

Recon. Req Action:

Certification:

Proof Due Date: 09/30/2026 Extension Filed Date:

Election or Proof:

Election/Proof Date:

Certificate Date:

Lapsed, Etc. Date:

Lapsed Letter

Wells:

Prov. Well Date:

Well Renov. Date:

**Points of Diversion:****Points of Diversion - Underground:**

(1) S 413 ft. E 1156 ft. from W4 corner, Sec 19 T 3N R 1E SLBM

Well Diameter: 18 in. Depth: 527 to ft.

Year Drilled:

Well Log:

Well Id#:

Elevation:

UTM: 425311.801, 4536796.954 (NAD83)

Source/Cmnt: Existing Community Center Well

(2) N 1110 ft. W 460 ft. from S4 corner, Sec 19 T 3N R 1E SLBM

Well Diameter: 12 in. Depth: 300 to ft.

Year Drilled:

Well Log:

Well Id#: 3087

Elevation:

UTM: 425605.233, 4536458.658 (NAD83)

Source/Cmnt: Existing Woodland Park Well

(3) S 123 ft. E 2305 ft. from W4 corner, Sec 30 T 3N R 1E SLBM

Well Diameter: 16 in. Depth: 300 to 1000 ft.

Year Drilled:

Well Log:

Well Id#: 3088

Elevation:

UTM: 425645.019, 4535278.833 (NAD83)

Source/Cmnt:

(4) 0 ft. E 275 ft. from W4 corner, Sec 12 T 3N R 1W SLBM

Well Diameter: in. Depth: to ft.

Year Drilled:

Well Log:

Well Id#:

Elevation:

UTM: 423450.756, 4540175.866 (NAD83)

Source/Cmnt: New Well

(5) S 1150 ft. 0 ft. from E4 corner, Sec 13 T 3N R 1W SLBM

Well Diameter: in. Depth: to ft.

Year Drilled:

Well Log:

Well Id#:

Elevation:

UTM: 424976.434, 4538194.829 (NAD83)

Source/Cmnt: New Well

**Water Uses:****Water Uses - Group Number: 32380**

Water Rights Appurtenant to the following use(s):

31-80(CERT), 31-2596(WUC), 31-2597(WUC), 31-2812(DIL), 31-2813(DIL),  
 31-4283(APP), 31-4420(UNAP), 31-4859(CERT), 31-4981(UGWC), 31-5017(CERT),  
 31-5031(APP), 31-5032(APP),

Water Use Types:

Municipal: Farmington

Period of Use: 01/01 to 12/31

Acre Feet Contributed by this Right for this Use: Unevaluated

Comments:

**Use Totals:**

Municipal sole-supply total: Unevaluated acft

**Segregation History:**

This Right was Segregated from: 31-4859, with Appl.#:A61561, Approval Date:09/11/1986 under which Proof is to be submitted.

as originally filed:	Flow in CFS	AND/ OR/ BLANK	Quantity in Acre-Feet	Water Uses						
				Irrigated Acreage	Stock (ELUs)	Domestic (EDUs)	Acre-Feet			
							Municipal	Mining	Power	Other
	3.64									
This Right as currently calculated:	Flow in CFS		Quantity in Acre-Feet	Water Uses						
				Irrigate Acreage	Stock (ELUs)	Domestic (EDUs)	Acre-Feet			
							Municipal	Mining	Power	Other
	3.64									

## Extensions

Filed: 09/22/2000	Proof Due: 09/30/2005	
Advertising:		
Publication Began: 10/10/2000	Publication End:	Newspaper: Davis County Clipper
Protested: Not Protested	Hearing Held:	Protest End Date: 11/06/2000
Approval:		
SE Action: Approved	Action Date: 01/02/2001	Memo Decision: No
Filed: 09/27/2005	Proof Due: 09/30/2011	
Advertising:		
Publication Began: 10/25/2005	Publication End: 11/01/2005	Newspaper: Davis County Clipper
Protested: Not Protested	Hearing Held:	Protest End Date: 11/21/2005
Approval:		
SE Action: Approved	Action Date: 02/10/2006	Memo Decision: No
Filed: 09/14/2011	Proof Due: 09/30/2016	
Advertising:		
Publication Began: 09/29/2011	Publication End: 10/06/2011	Newspaper: Davis County Clipper
Protested:	Hearing Held:	Protest End Date: 10/26/2011
Approval:		
SE Action: Approved	Action Date: 11/23/2011	Memo Decision: No
Filed: 09/09/2016	Proof Due: 09/30/2026	
Advertising:		
Publication Began: 11/17/2016	Publication End: 11/24/2016	Newspaper: Davis County Clipper
Protested: Not Protested	Hearing Held:	Protest End Date: 12/14/2016
Approval:		
SE Action: Approved	Action Date: 01/24/2017	Memo Decision: No

# Water Right Details for 31-5045

Utah Division of Water Rights

9/25/2019 3:05 PM

(WARNING: Water Rights makes NO claims as to the accuracy of this data.)

Water Right: 31-5045

Application/Claim: A65365

Certificate:

## Changes:

a17565 (Filed: 09/01/1993) Certificated

## Owners:

Name: Farmington City  
Address: 130 North Main Street  
Farmington, UT 84025

Interest: 100%

Remarks:

## General:

Type of Right: Application To Appropriate Source of Info.: Certificate Status: Certificated  
Quantity of Water: 0.015 cfs OR 1.26 ACFT

Source: Slough  
County: Davis  
Common Description: SW of Farmington

Proposed Det. Book: 31- Map: Pub. Date:

Land Owned by Appl.: Yes County Tax Id#:

Distribution System:

## Dates:

Filing:

Filed: 05/13/1991  
Priority: 05/13/1991 Decree/Class:

Advertising:

Publication Began: 06/04/1991 Publication End: Newspaper: Davis County Clipper  
Protest End Date: 07/19/1991 Protested: Not Protested Hearing Held:

Approval:

State Eng. Action: Approved Action Date: 08/02/1991  
Recon. Req. Date: Recon. Req Action:

Certification:

Proof Due Date: 08/31/1994 Extension Filed Date:  
Election or Proof: Proof Election/Proof Date: 05/18/1993  
Certificate Date: 01/13/1995 Lapsed, Etc. Date: Lapsed Letter

Wells:

Prov. Well Date: Well Renov. Date:

**Points of Diversion:****Points of Diversion - Point to Point:**

(1) Stream from a point at N 2913 feet W 886 feet from S4 corner, Sec 26 T 3N R 1W SLBM  
to a point at N 2569 feet W 619 feet from S4 corner, Sec 26 T 3N R 1W SLBM

Comment:

Source: Slough

**Water Uses:****Water Uses - Group Number: 32986**

Water Rights Appurtenant to the following use(s):

31-4377(REJ), 31-5045(CERT),

**Water Use Types:**

Stock Water-Beneficial Use Amount: Unevaluated ELUs Group Total: 45

Period of Use: 01/01 to 12/31

Comments:

**Place of Use Stock:**

	North West				North East				South West				South East			
	NW	NE	SW	SE	NW	NE	SW	SE	NW	NE	SW	SE	NW	NE	SW	SE
Sec 26 T 3N R 1W SLBM				X						X						

**Use Totals:**

Stock Water sole-supply total: Unevaluated ELUs for a group total of: 45 ELUs



# Water Right Details for 31-5239

Utah Division of Water Rights

9/25/2019 3:03 PM

(WARNING: Water Rights makes NO claims as to the accuracy of this data.)

Water Right: 31-5239

Application/Claim: A36466

Certificate:

## Changes:

a40095 (Filed: 08/08/2014) Rejected

## Owners:

Name: Farmington City  
Address: PO Box 160  
Farmington UT 84025

Interest: 100%

Remarks:

## General:

Type of Right: Application To Appropriate	Source of Info.: Ownership Segregation	Status: Water User's Claim
Quantity of Water: 6 cfs OR 1364.848 ACFT		
Source: Spring Creek & Unnamed drains		
County: Davis		
Common Description: Farmington Bay Area		
Proposed Det. Book: 31-	Map:	Pub. Date:
Land Owned by Appl.:	County Tax Id#:	
Distribution System:		

## Dates:

Filing:

Filed: 10/05/1964

Priority: 10/05/1964

Decree/Class:

Advertising:

Publication Began: 12/04/1964

Publication End:

Newspaper:

Protest End Date:

Protested: Not Protested

Hearing Held:

Approval:

State Eng. Action: Approved

Action Date: 06/13/1966

Recon. Req. Date:

Recon. Req Action:

Certification:

Proof Due Date:

Extension Filed Date:

Election or Proof: Election

Election/Proof Date: 07/30/1968

Certificate Date: 12/23/1988

Lapsed, Etc. Date:

Lapsed Letter

Wells:

Prov. Well Date:

Well Renov. Date:

**Points of Diversion:**

Points of Diversion - Surface:

Stream Alteration Required: No

(1) N 1930 ft. W 2400 ft. from SE corner, Sec 22 T 3N R 1W SLBM

Diverting Works: Open ditch &amp; storage ponds

Source: Spring Creek and unnamed drains

Elevation:

UTM: 420980.422, 4536750.592

**Water Uses:****Water Uses - Group Number: 622628**

Water Rights Appurtenant to the following use(s):

31-5239(WUC),

Water Use Types:

Irrigation-Beneficial Use Amount: 338.412 acres Group Total: 338.412 Period of Use: 04/01 to 10/31

Comments:

Stock Water-Beneficial Use Amount: 400 ELUs Group Total: 400

Period of Use: 01/01 to 12/31

Comments:

Wildlife: Waterways for bird refuge and wildlife development

Period of Use: 01/01 to 12/31

Acre Feet Contributed by this Right for this Use: Unevaluated

Comments:

Place Of Use:	North West				North East				South West				South East				Section Totals
	NW	NE	SW	SE	NW	NE	SW	SE	NW	NE	SW	SE	NW	NE	SW	SE	
Sec 27 T 2N R 1W SLBM	X	X	X	X	X	X	X	X	X	X	X	X	X	X	X	X	
Sec 22 T 3N R 1W SLBM	X	X	X	X	X	X	X	X	X	X	X	X	X	X	X	X	
Sec 23 T 3N R 1W SLBM	X	X	X	X	X	X	X	X	X	X	X	X	X	X	X	X	
Sec 26 T 3N R 1W SLBM	X	X	X	X	X	X	X	X	X	X	X	X	X	X	X	X	
Sec 27 T 3N R 1W SLBM	X	X	X	X	X	X	X	X	X	X	X	X	X	X	X	X	
Group Acreage Total :																	

**Place of Use Stock:**

	North West				North East				South West				South East			
	NW	NE	SW	SE	NW	NE	SW	SE	NW	NE	SW	SE	NW	NE	SW	SE
Sec 27 T 2N R 1W SLBM	X	X	X	X	X	X	X	X	X	X	X	X	X	X	X	X
Sec 22 T 3N R 1W SLBM	X	X	X	X	X	X	X	X	X	X	X	X	X	X	X	X
Sec 23 T 3N R 1W SLBM	X	X	X	X	X	X	X	X	X	X	X	X	X	X	X	X
Sec 26 T 3N R 1W SLBM	X	X	X	X	X	X	X	X	X	X	X	X	X	X	X	X
Sec 27 T 3N R 1W SLBM	X	X	X	X	X	X	X	X	X	X	X	X	X	X	X	X

**Use Totals:**

Irrigation sole-supply total: 338.412 acres

for a group total of: 338.412 acres

Stock Water sole-supply total: 400 ELUs

for a group total of: 400 ELUs

Other sole-supply total: Unevaluated acft

**Reservoirs:**

Small Dam Required: No

Reservoir/Storage Name: Unnamed Reservoir

Dam Number:

Capacity: 50 acre-feet

Area Inundated: 9 acres

Dam Height: 10 feet

From: 01/01 to 12/31 inclusive

	North West Quarter				North East Quarter				South West Quarter				South East Quarter			
Area	NW	NE	SW	SE	NW	NE	SW	SE	NW	NE	SW	SE	NW	NE	SW	SE
Sec 22 T 3N R 1W SLBM									X	X	X	X	X	X	X	X

**Segregation History:**

This Right was Segregated from: 31-2780, with Appl.#:A36466, Approval Date: / / under which Proof is to be submitted.

as originally filed:	Flow in CFS	AND/ OR/ BLANK	Quantity in Acre-Feet	Water Uses						
				Irrigated Acreage	Stock (ELUs)	Domestic (EDUs)	Acre-Feet			
							Municipal	Mining	Power	Other
			1364.848	338.412	400.0					
This Right as currently calculated:	Flow in CFS		Quantity in Acre-Feet	Water Uses						
				Irrigate Acreage	Stock (ELUs)	Domestic (EDUs)	Acre-Feet			
							Municipal	Mining	Power	Other
			1364.848	338.412	400.0					

**Nonuses**

Filed: 06/07/2006

Expiration Date: 10/31/2011

Advertising:

Publication Began: 09/12/2006

Publication End: 09/19/2006

Newspaper: Davis County Clipper

Protested: Not Protested

Protest End Date: 10/09/2006

Hearing Held:

Approval:

SE Action: Approved

Action Date: 10/17/2006

Comments:

Re-advertised 09/5/2006 because storage was not included in the original nonuse application. SAS 9/5/2006

## **ADDENDUM – DRAINAGE FIXTURE UNIT CALCULATIONS**

**ADDENDUM -1**  
**FARMINGTON CITY – CULLINARY WATER IFFP**  
**DRAINAGE FIXTURE UNIT CHANGES**

**June 23, 2022**

**Current Meter Sizing Impact Fee**

Currently the implementation for impact fees has been done based upon meter size. Table B-2 from the AWWA manual M1 shows the safe maximum operating capacity for various meters and meter sizes. Financial institutes have utilized this table to assign the magnitude of the impact fee based upon comparing the maximum operating capacity of a larger meter to a residential meter size. This comparison is based on peak flows and not volume of water used. This has shown to be flawed due to the variability of flow in the larger meters. Some larger developments have paid significantly less impact fee by justifying smaller meter sizes.

Other options have been investigated including dwelling units or square area for the basis of the impact fee. Some communities have modified the AWWA table information in an effort to assess larger projects with larger fees. Another option is that of using Drainage Fixture Unit Calculations from the International Plumbing Code.

**Drainage Fixture Unit (DFU) Calculations**

Fixture Unit Calculations are used to determine the pipe size for water lines and services. This method has been used successfully by several Sewer Districts in the state including central Davis Sewer District.

The following table 709.1 for Drainage Fixture Units is taken from the 2012 International Plumbing Code showing the assigned flows based on the fixture used.

This drainage figure unit calculation is used for several reasons. First, because the city has secondary water, most of the water coming into the home should equal that going out. Secondly this has been used successfully by the sewer district for some time. Also, other communities in Northern Utah have successfully used DFU's as the basis for equivalency in water usage between varying land usages.

A typical single-family residence in Farmington City would have an automatic clothes washer (2DFU), with three bathroom groups (3x5DFU) and one a kitchen sink domestic with grinder (2DFU) and dishwasher (2DFU) and a service sink (2DFU) for a total of 21 Drainage Fixture Units. Other areas in Northern Utah, have shown between 22 and 26 DFUs for a Single-Family residence. For consistency, we recommend that an ERU in Farmington be 24 Drainage Fixture Units.

**Multi-Family Units**

In a comparison done of several single-family units and several apartment units over a two-year period. Based upon these flow and other evaluations, a Multi-Family unit equates to 82% of an ERU.

TABLE 706.1  
DRAINAGE FIXTURE UNITS FOR FIXTURES AND GROUPS

FIXTURE TYPE	DRAINAGE FIXTURE UNIT VALUE AS LOAD FACTORS	MINIMUM SIZE OF TRAP (Inches)
Automatic clothes washers, commercial <sup>a,c</sup>	3	2
Automatic clothes washers, residential <sup>b</sup>	2	2
Bathroom group as defined in Section 703 (1.6 gpf water closet) <sup>f</sup>	5	—
Bathroom group as defined in Section 703 (water closet flushing greater than 1.6 gpf) <sup>f</sup>	6	—
Bathbath <sup>b</sup> (with or without overhead shower or whirlpool attachment)	2	1½
Bidet	1	1½
Combination sink and tray	2	1½
Dental lavatory	1	1½
Dental unit or compule	1	1½
Dishwashing machine <sup>c</sup> , domestic	2	1½
Drinking fountain	½	1½
Emergency floor drain	0	2
Floor drains <sup>a</sup>	2 <sup>a</sup>	2
Floor sinks	Note b	2
Kitchen sink, domestic	2	1½
Kitchen sink, domestic with food waste grinder and/or dishwasher	2	1½
Laundry tray (1 or 2 compartments)	2	1½
Lavatory	1	1½
Shower (based on the total flow rate through showerheads and body sprays)		
Flow rate:		
5.7 gpm or less	2	1½
Greater than 5.7 gpm to 12.3 gpm	3	2
Greater than 12.3 gpm to 25.8 gpm	5	3
Greater than 25.8 gpm to 55.6 gpm	6	4
Service sink	2	1½
Sink	2	1½
Urinal	4	Note d
Urinal, 1 gallon per flush or less	2 <sup>e</sup>	Note d
Urinal, nonwater supplied	½	Note d
Wash sink (circular or multiple) each set of fixtures	2	1½
Water closet, flushometer tank, public or private	6 <sup>e</sup>	Note d
Water closet, private (1.6 gpf)	3 <sup>e</sup>	Note d
Water closet, private (flushing greater than 1.6 gpf)	6 <sup>e</sup>	Note d
Water closet, public (1.6 gpf)	6 <sup>e</sup>	Note d
Water closet, public (flushing greater than 1.6 gpf)	6 <sup>e</sup>	Note d

For III: 1 inch = 25.4 mm, 1 gallon = 3.785 L, gpf = gallon per flushing cycle, gpm = gallon per minute.

a. For traps larger than 3 inches, see Table 709.2.

b. A showerhead over a bathtub or whirlpool bathtub attachment does not increase the drainage fixture unit value.

c. See Sections 709.2 through 709.4.1 for methods of computing unit value of fixtures not listed in this table or for rating of devices with intermittent flows.

d. Trap size shall be consistent with the fixture outlet size.

e. For the purpose of computing loads on building drains and sewers, water closets and urinals shall not be rated at a lower drainage fixture unit value than the lowest values are confirmed by testing.

f. For fixtures added to a bathroom group, add the dfu value of those additional fixtures to the bathroom group fixture count.

g. See Section 406.3 for sizing requirements for fixture drains, branch drains, and drainage stacks for automatic clothes washer discharge.

h. See Sections 709.4 and 709.4.1.

## Recommended Connection Schedule

We recommend the following:

1 ERC = 24 Fixture Units

Multi Family Unit = 0.82% of 1 ERC

All other uses be calculated by dividing the total number of proposed Fixture Units divided by 24 to determine the number of ERC's. This number will then be multiplied by the single-family impact fee.